

Become an agile and international company!
成为敏捷化的国际性公司!

浙江日发纺织机械股份有限公司
ZHEJIANG RIFA TEXTILE MACHINERY CO.,LTD

Add: RIFA Digital Technology Zone, Xinchang Hi-tech Industrial Park, Zhejiang,China(312500)
地址: 浙江省新昌县高新技术产业园区日发数字科技园

浙江日发纺机技术有限公司
ZHEJIANG RIFA TEXTILE MACHINERY TECH CO.,LTD

Add: RIFA Digital Technology Zone, Xinchang Hi-tech Industrial Park, Zhejiang,China(312500)
地址: 浙江省新昌县高新技术产业园区日发数字科技园

电话(Tel): 400-999-8008 / 86-575-86299129
传真(Fax): 86-575-86299118
www.rifatm.com



本样本仅供参考, 不作为技术验收的依据。
为提高产品质量, 本公司保留更改规格之权力, 恕不另行通知。
This sample is used for reference only and is not serving as a basis for technical acceptance.
For the purpose of improving product quality, our company reserves the right to change product specifications without notice.



FIBRE PREPARATION Solutions

前准备解决方案

工业化纤系列

INDUSTRIAL FILAMENT FIBER TFO TWISTER SERIES



关于日发纺机

浙江日发纺织机械股份有限公司成立于2002年，注册资金6948.7万。公司系国家重点高新技术企业，国家机械工业重点骨干企业，国家863计划CIMS工程示范企业，全国CAD应用工程示范企业，国家火炬计划重点高新技术企业，中国纺织机械协会副会长单位。现旗下控股山东日发纺织机械有限公司、安徽日发纺织机械有限公司、浙江日发纺机技术有限公司。

公司以成为“敏捷化的国际性公司”为愿景，以“为用户提供智能纺织装备系统解决方案，并协助用户逐步实现数字化工厂梦想”为使命，致力于机电行业的“数字科技”，已成为国内外享有高知名度的纺织设备生产企业。二十几年来已成功开发了清梳联、并条机、转杯纺纱机、喷气涡流纺纱机、倍捻机、直捻机、假捻变形机、精密并纱（络筒）机、自动穿经机、喷气织机、喷水织机、剑杆织机、毛巾织机、特种织机、针织圆机、无缝内衣机、袜机、柔版无水印花机、非织造布设备等系列的上百种产品，能够为行业提供纺纱、前准备、织造、非织造、印染五大解决方案，涉及纺织行业的各个领域。产品遍及全国各地，并销往全球30多个国家和地区，在各个行业的市场占有率位居前列。

日发纺机正致力于创造崭新的“数字科技”理念，在未来的整机生产中，建立“人流、物流、信息流”的互动平台，实现科技、环境、制造的和谐统一。铸就“信息化、敏捷化、国际化”的机械制造生产基地。

浙江日发纺机技术有限公司系日发纺机全资子公司，注册成立于2009年。公司主要产品为针织圆机、袜机、无缝内衣机、倍捻机、直捻机、假捻变形机、精密并纱（络筒）机、无水印花机，继承日发纺机二十多年的专业经验，致力于打造世界智能化高端纺织机械设备研发与制造基地。



About Us

Zhejiang Rifa Textile Machinery Co., Ltd. is founded in August, 2002 with a registered capital of 69.487 million yuan. The Company is one of the national key high-tech enterprises of the China's Textile Industry, a key enterprise of China's Machinery Industry, demonstration enterprise of both China National 863 Planning CIMS Engineering and National CAD Application Engineering, a high-tech enterprise of China National Torch Plan, vice president unit of China Textile Machinery Association. RIFA Company now has three subsidiaries under it, namely Shandong Rifa Textile Machinery Co., Ltd., Anhui Rifa Textile Machinery Co., Ltd. and Zhejiang Rifa Textile Machinery Tech Co., Ltd.

With the vision of "become an agile and international company" and the mission of "Provide users with intelligent textile equipment system solutions, and help users gradually realize the dream of a digital factory", Zhejiang Rifa Textile Machinery Co., Ltd. is devoted to the area of "digital technology" in mechanical and electrical industry, and has become a well-known textile equipment manufacturer with excellent reputation at home and abroad. For over twenty years, the company has successfully developed five solutions such as spinning, Fibre Preparation, weaving, non-woven and printing and dyeing, including blow-room machine, draw frame, rotor spinning machine, air jet vortex spinning machine, two-for-one twister machine, twister machine for tire cord, false-twist texturing machine, precise winding machine(precise rewinding machine), automatic warp drawing machine, air jet loom, water jet loom, rapier loom, terry towel loom, specific loom, circular knitting machine, seamless knitting machine, hosiery machine, waterless decorating machine and non-woven equipment etc hundreds of machines... The products have been distributed to all areas around China and sold to more than 30 foreign countries and regions with a leading market share in each respective industry.

RIFA is devoting itself to create a whole new theory of digital technology, establishing an interactive platform of "people flow, material flow and information flow", realizing harmony and unify of science and technology, environment and manufacturing, and aiming to become a manufacturing base of "informatization, agility and internationalization".

Incorporated in 2009, Zhejiang Rifa Textile Machinery Tech Co., Ltd. is a wholly-owned subsidiary of RIFA. The company's main products include circular knitting machine, hosiery machine, seamless underwear machine, two-for-one twister machine, twister machine for tire cord, false-twist texturing machine, precise doubling machine(precise rewinding machine) and waterless decorating machine. The company has inherited professional experience of over 20 years in RIFA, and is committed to becoming the world R&D and manufacturing base of intelligent high-end textile machinery and equipment.





直捻机是采用内、外丝直接合股加捻的捻线设备，相比倍捻机可以减少并纱或络纱合股的前准备工序，以及可以获得更大的纱线卷装量，有效提高生产效率、减少用工、降低能耗。圆滑光洁的丝线过丝通道减少了丝线的磨损，降低了股线的强力损伤，更适合轮胎帘子线类高强度丝线要求特点的加捻工艺。现已成为生产高品质轮胎帘子线、输送带线、缆绳线等高强度工业用线以及地毯用纱的首选加捻设备，而TC系列直捻机恰是我司针对相关工艺要求精心设计开发而成的专业加捻设备。其主要特点如下：

- 优化的机电一体化设计，实现精准的纱线捻度控制。
- 优化的锭子结构实现了小气圈加捻，实现了有效的节能降耗；可选配精密的外纱主动输送装置，实现加捻气圈的进一步缩小控制，达到最佳的节能降耗效果。
- 优化的匀捻器结构和内外张力控制器，可以有效保障内外纱长度一致性和捻度匀整性，从而满足生产高品质纱线。
- 圆滑光洁的过丝通道采用特种陶瓷和具有特殊表面处理工艺的过丝滚轮，降低了丝线摩擦时的强力损伤。
- 配置单锭张力检测装置，有效保障了纱线运行稳定性，提高了丝线加捻品质。
- 人性化设计的控制界面和控制系统，可以实时监控单锭运行状态及装机运行状态。

Direct Twisting Machine for Tire Cord is a one-time merging using a single processing, which reduces the number of steps compared with the traditional twisting method. So the yarn capacity is also more compared to the two-for-one twister machine. This increases production efficiency, reduces labor, and reduces energy consumption. At the same time, due to the reduction of the processing, the wear (strong loss) is correspondingly reduced, which is more suitable for the high strength requirement of Tire Cord. It has become the most suitable professional machine for producing high quality yarns such as tire cord, industrial yarns and carpet threads. This direct twisting machine is designed and developed by our company for the relevant process requirements. Its main features are as follows:

- Optimal mechatronic design to realize precise yarn twist tension control.
- An optimized spindle mechanism is used to achieve small balloon twisting for effective energy saving. An optional precise outer yarn positive conveyor can be equipped to achieve further reduction control of the small balloon twisting for effective energy saving.
- Excellent twister mechanism and inner and outer tension control can effectively guarantee the consistency of inner and outer yarn length and evenness, so as to meet the production of high quality yarn.
- The smooth wire passage adopts special ceramics and wire roller with special surface treatment technology to reduce the strong damage of wire friction.
- The equipped single spindle testing device efficiently guarantees the stability of the yarn running and improves the twisting quality.
- The humanized control interface and control system can monitor the operation of the single spindle and the operation status.

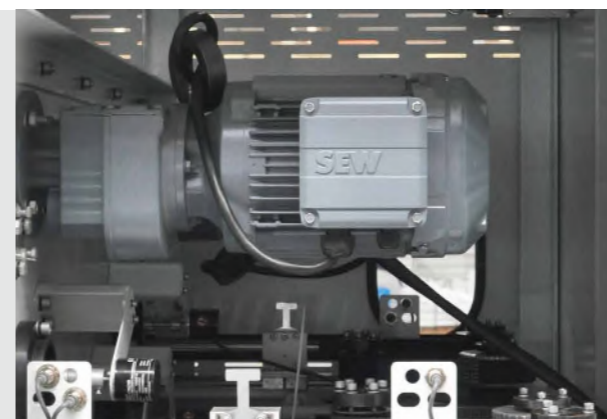
直捻机

DIRECT TWISTING MACHINE FOR TIRE CORD



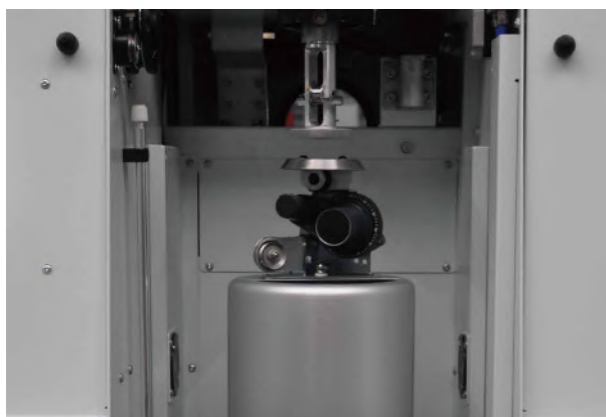
采用“控制气圈”节能专利技术，最高可降低能耗40%，减少气圈噪音最高30%（选配）。

Adopt "control ballooning" energy- saving patent technology reducing energy consumption by 40% and noise of ballooning by 30% at a maximum.



锭子马达、超喂装置、卷绕装置可独立控制，使加捻工艺调整更灵活，操作更简单。

Spindle motor, overfeed roller and winding device can be controlled independently, which makes twist processing adjust and operation easy.



采用高效节能锭子电机，单电机独立驱动，最高锭速可达11000rpm。

With efficient energy saving spindle motor and single motor with independent drive, the speed can reach up to 11000rpm at a maximum.



每个加捻位都配置了纱线张力检测装置，保证了优异的丝线品质。

Each twist position is equipped with yarn tension detection device , which ensure excellent yarn quality.



采用先进的匀捻器技术，使单纱长度差异最小。

Adopt advanced twister technology minimizing length difference of single yarn.



工艺调整方便，传动系统实现无级调速。

Easy processing adjustment and the speed of drive system is regulated without level.



每个加捻位者配置了纱线张力补偿装置，保证优异的筒子成形、降低捻度差异。

Each twist position is equipped with yarn tension compensation device, which ensures the excellent bobbin forming and reduces twist difference.



配有落筒输送装置。

Doffing deliver device is equipped also.



直捻机是采用内、外丝直接合股加捻的捻线设备，相比倍捻机可以减少并纱或络纱合股的前准备工序，以及可以获得更大的纱线卷装量，有效提高生产效率、减少用工、降低能耗。圆滑光洁的丝线过丝通道减少了丝线的磨损，降低了股线的强力损伤，更适合轮胎帘子线类高强度丝线要求特点的加捻工艺。现已成为生产高品质轮胎帘子线、输送带线、缆绳线等高强度工业用线以及地毯用纱的首选加捻设备，而TC系列直捻机恰是我司针对相关工艺要求精心设计开发而成的专业加捻设备。其主要特点如下：

- 优化的机电一体化设计，实现精准的纱线捻度控制。
- 优化的锭子结构实现了小气圈加捻，实现了有效的节能降耗；可选配精密的外纱主动输送装置，实现加捻气圈的进一步缩小控制，达到最佳的节能降耗效果。
- 优化的匀捻器结构和内外张力控制器，可以有效保障内外纱长度一致性和捻度匀整性，从而满足生产高品质纱线。
- 圆滑光洁的过丝通道采用特种陶瓷和具有特殊表面处理工艺的过丝滚轮，降低了丝线摩擦时的强力损伤。
- 配置单锭张力检测装置，有效保障了纱线运行稳定性，提高了丝线加捻品质。
- 人性化设计的控制界面和控制系统，可以实时监控单锭运行状态及装机运行状态。

Direct Twisting Machine for Tire Cord is a one-time merging using a single processing, which reduces the number of steps compared with the traditional twisting method. So the yarn capacity is also more compared to the two-for-one twister machine. This increases production efficiency, reduces labor, and reduces energy consumption. At the same time, due to the reduction of the processing, the wear (strong loss) is correspondingly reduced, which is more suitable for the high strength requirement of Tire Cord. It has become the most suitable professional machine for producing high quality yarns such as tire cord, industrial yarns and carpet threads. This direct twisting machine is designed and developed by our company for the relevant process requirements. Its main features are as follows:

- Optimal mechatronic design to realize precise yarn twist tension control.
- An optimized spindle mechanism is used to achieve small balloon twisting for effective energy saving. An optional precise outer yarn positive conveyor can be equipped to achieve further reduction control of the small balloon twisting for effective energy saving.
- Excellent twister mechanism and inner and outer tension control can effectively guarantee the consistency of inner and outer yarn length and evenness, so as to meet the production of high quality yarn.
- The smooth wire passage adopts special ceramics and wire roller with special surface treatment technology to reduce the strong damage of wire friction.
- The equipped single spindle testing device efficiently guarantees the stability of the yarn running and improves the twisting quality.
- The humanized control interface and control system can monitor the operation of the single spindle and the operation status.



采用高效节能锭子电机，单电机独立驱动，最高锭速可达11000rpm。

With efficient energy saving spindle motor and single motor with independent drive, the speed can reach up to 11000rpm at a maximum.



快速灵活的气动穿纱装置。

Quick and flexible pneumatic threading equipment.



采用先进的匀捻器技术，使单纱长度差异最小。

Adopt advanced twister technology minimizing length difference of single yarn.



每个加捻位都配置了纱线张力检测装置，保证了优异的丝线品质。

Each twist position is equipped with yarn tension detection device , which ensure excellent yarn quality.



锭子马达、超喂装置、卷绕装置可独立控制，使加捻工艺调整更灵活，操作更简单。

Spindle motor, overfeed roller and winding device can be controlled independently, which makes twist processing adjust and operation easy.



工艺调整方便，传动系统实现无级调速。

Easy processing adjustment and the speed of drive system is regulated without level.



每个加捻位者配置了纱线张力补偿装置，保证优异的筒子成形、降低捻度差异。

Each twist position is equipped with yarn tension compensation device, which ensures the excellent bobbin forming and reduces twist difference.



配有落筒输送装置。

Doffing deliver device is equipped also.



直捻机是采用内、外丝直接合股加捻的捻线设备，相比倍捻机可以减少并纱或络纱合股的前准备工序，以及可以获得更大的纱线卷装量，有效提高生产效率、减少用工、降低能耗。圆滑光洁的丝线过丝通道减少了丝线的磨损，降低了股线的强力损伤，更适合轮胎帘子线类高强度丝线要求特点的加捻工艺。现已成为生产高品质轮胎帘子线、输送带线、缆绳线等高强度工业用线以及地毯用纱的首选加捻设备，而TC系列直捻机恰是我司针对相关工艺要求精心设计开发而成的专业加捻设备。其主要特点如下：

- 优化的机电一体化设计，实现精准的纱线捻度控制。
- 优化的锭子结构实现了自然小气圈加捻，实现了有效的节能降耗。
- 优化的匀捻器结构和内纱张力控制器，可以有效保障内外纱长度一致性和捻度匀整性，从而满足生产高品质纱线。
- 圆滑光洁的过丝通道采用特种陶瓷和具有特殊表面处理工艺的过丝滚轮，降低了丝线摩擦时的强力损伤。
- 配置单锭张力检测装置，有效保障了纱线运行稳定性，提高了丝线加捻品质。
- 人性化设计的控制界面和控制系统，可以实时监控单锭运行状态及装机运行状态。

Direct Twisting Machine for Tire Cord is a one-time merging using a single processing, which reduces the number of steps compared with the traditional twisting method. So the yarn capacity is also more compared to the two-for-one twister machine. This increases production efficiency, reduces labor, and reduces energy consumption. At the same time, due to the reduction of the processing, the wear (strong loss) is correspondingly reduced, which is more suitable for the high strength requirement of Tire Cord. It has become the most suitable professional machine for producing high quality yarns such as tire cord, industrial yarns and carpet threads. This direct twisting machine is designed and developed by our company for the relevant process requirements. Its main features are as follows:

- Optimal mechatronic design to realize precise yarn twist tension control.
- An optimized spindle mechanism is used to achieve small balloon twisting for effective energy saving.
- Excellent twister mechanism and inner and outer tension control can effectively guarantee the consistency of inner and outer yarn length and evenness, so as to meet the production of high quality yarn.
- The smooth wire passage adopts special ceramics and wire roller with special surface treatment technology to reduce the strong damage of wire friction.
- The equipped single spindle testing device efficiently guarantees the stability of the yarn running and improves the twisting quality.
- The humanized control interface and control system can monitor the operation of the single spindle and the operation status.



采用高效节能锭子电机，单电机独立驱动。锭子马达、卷绕辊可独立停锭，使加捻位操作简单、安全。

With efficient energy saving spindle motor , single motor drives independently. Single spindle motor and winding roller can be stopped independently, which makes twist operation easy and safe.



配有落筒输送装置。

Doffing deliver device is equipped also.



快速灵活的气动穿纱装置。

Quick and flexible pneumatic threading equipment.



工艺调整方便，传动系统实现无级调速。

Easy processing adjustment and the speed of drive system is regulated without level.



每个加捻位都配置了导纱张力补偿、监测装置，保证优异产品质量。

Each twist position is equipped with thread tension compensation, monitoring device to ensure excellent product quality.



T111电锭倍捻机，锭子采用了电机直接驱动的方式，保证了锭子转速的稳定性。该机型可实现单锭单控，工艺数据实时监控。其主要特点如下：

- 采用全新的锭子结构，可满足不同纱线的不同工艺要求。
- 单锭数据跟踪技术，实现满筒自停等功能。
- 优化的过丝道结构，可以有效减小纱线的加工损伤，实现加工高品质纱线的要求。
- 全新的电控系统，可以实现便捷的工艺切换。
- 可实现单股或多股加捻后成型的要求，满足部分纱线需要初复捻的要求。

T111 electric spindle two-for-one twister machine, spindle is driven by motor Directly, ensuring the stable spindle speed. This model can achieve the goal of single spindle control, real-time monitoring related data of single spindle. Its main features are as follows:

- With a new spindle structure, it can meet the different process requirements of different yarns.
- Single spindle data tracking technology to stop automatically with full-bobbin and so on.
- The optimal yarn passage structure can effectively reduce the processing damage of the yarn and realize the requirement of processing for high-quality yarn.
- New electronic control system for easy process switching.
- It can realize the requirement of single or multi-strand post-forming, and meet the requirements of some yarns for compound twisting.

电锭倍捻机

ELECTRIC SPINDLE TWO-FOR-ONE TWISTER MACHINE



采用高效节能锭子电机，单电机独立驱动。锭子马达、卷绕棍可独立停锭，使加捻位操作简单、安全。

With efficient energy saving spindle motor and single motor with independent drive. Spindle is stopped by spindle motor, winding roller, which makes twist operation easy and safe.



配有落筒输送装置。

Doffing deliver device is equipped also.



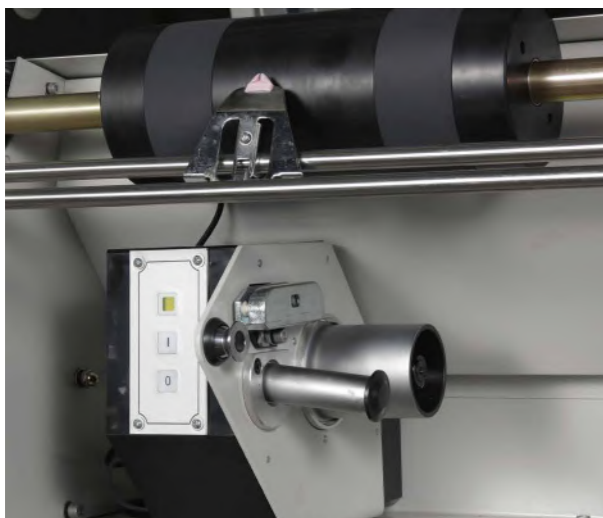
每个加捻位者配置了纱线张力补偿装置，保证优异的筒子成形、降低捻度差异。

Each twist position is equipped with yarn tension compensation device, which ensures the excellent bobbin forming and reduces twist difference.



工艺调整方便，传动系统实现无级调速。

Easy processing adjustment and the speed of drive system is regulated without level.



实现单股和多股纱线的复合加捻成型的要求。每个加捻位都配置了导纱张力补偿、监测装置，保证优异产品质量。

Realize twisting requirement for single stand yarn and multistrands yarn. Each twist position is equipped with thread tension compensation, monitoring device to ensure excellent product quality.



CC11地毯丝直捻机是我司针对地毯丝的特点而开发的新型直捻机。地毯丝直捻机采用内、外纱直接合股加捻的方法，比传统加捻方式可以减少前道并纱工序，同时具有更大卷装量和更省耗电的优点。因此提高了生产效率、减少用工、降低了能耗以及简单便捷的操作。其主要特点如下：

- 全新锭子结构技术，实现小气圈加捻，从而实现有效的节能。
- 采用恒定的外纱张力控制机构，实现小气圈加捻，从而实现有效的节能。
- 单锭配置了张力检测装置，有效保证纱线在运行过程中的张力一致性。
- 优化的控制系统，可以实时监控单锭的运行状态。

CC11 is a new type of direct twisting machine developed by our company for the yarn in the carpet field. The direct twisting machine for carpet yarn is a one-time merging method with a single processing, which reduces the number of steps compared with the traditional twisting method. So the yarn capacity is also more compared to the two-for-one twister machine, it is with less power consumption. This increases production efficiency, reduces labor, reduces energy consumption and operates easy. Its main features are as follows:

- New spindle structure technology to achieve small balloon twisting, thus achieving effective energy saving.
- A constant outer yarn tension control mechanism is used to achieve small balloon twisting for effective energy saving.
- The single spindle is equipped with a tension detecting device to ensure the tension uniformity of the yarn during operation.
- Simplified control system for real-time monitoring of the operating status of a single spindle.



采用高效节能锭子电机，单电机独立驱动。锭子马达、卷绕辊可独立停锭，使加捻位操作简单、安全。

With efficient energy saving spindle motor and single motor with independent drive. Spindle is stopped by spindle motor, winding roller, which makes twist operation easy and safe.



快速灵活的气动穿纱装置。

Quick and flexible pneumatic threading equipment.



每个加捻位都配置了导纱张力补偿、监测装置，保证优异产品质量。

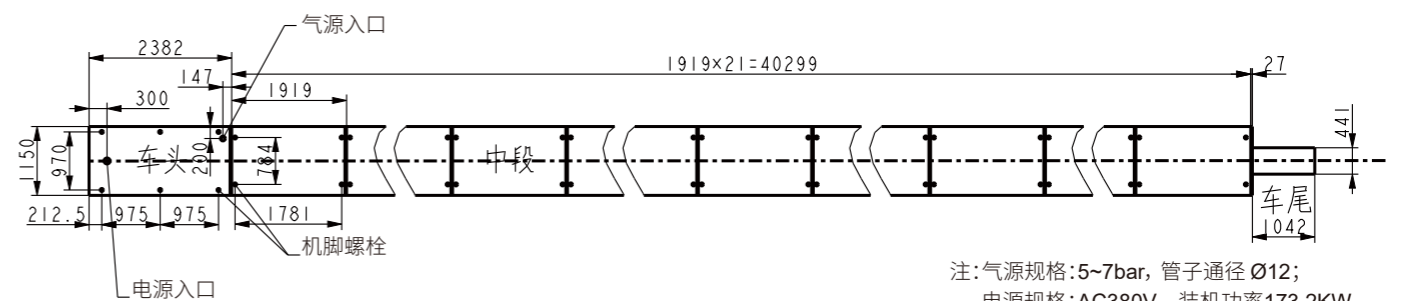
Each twist position is equipped with thread tension compensation, monitoring device to ensure excellent product quality.



工艺调整方便，传动系统实现无级调速。

Easy processing adjustment and the speed of drive system is regulated without level.

序号 Name	技术参数 Technical parameters
控制系统 Control System	PLC控制 PLC control
适用纤度 Applicative Fineness	940~2520dtex (锦纶、涤纶) 940~2520dtex (polyamide, polyester)
锭子 Spindle	规格: Ø230/Ø250 单电机独立驱动, 标配型Ø230mm。 Type: Ø230/Ø250 Single Motor with Independent Drive, Standard Mode: Ø230mm
锭数 Number of Spindle	标准型: 8锭/节, 最大 168锭 Standard Type: 8 spindle/ section, max 168 spindles
锭距 Spindle Gauge	450mm
锭速 Spindle Speed	3000~7000 r/min
捻度 Twisting Range	78~921 T/m
捻向 Twisting Direction	S或Z捻 S or Z twist
内纱张力器 Tyarn Tensioner	磁滞张力器 Magneric-lag Tensioner
供纱筒管尺寸 (直径×长度) Bobbin(Diameter×Length)	(Ø54~Ø110)×(200~300)
卷取筒管尺寸 Size Of Winding Bobbin	(Ø70~Ø90)×290±2
卷绕动程 Winding Traverse	254mm
卷取直径 Winding Diameter	最大 Ø350mm 350mm at maximum
供纱直径 Yarn Supply Diameter	230型: 最大 Ø230mm 230mm at maximum
装机功率 Installation Power	最大 173.2kW 173.2kW at maximum
启动方式 Starting Mode	软启动 Soft Starting
卷绕角 Winding Angle	15°~ 25° 直接设定 (无级可调) 15°~ 25° Direct Set (Regulation without Level)
引纱线速 Leading Speed	10~70m/min
穿纱气压 Threading Pressure	4.0±0.5bar

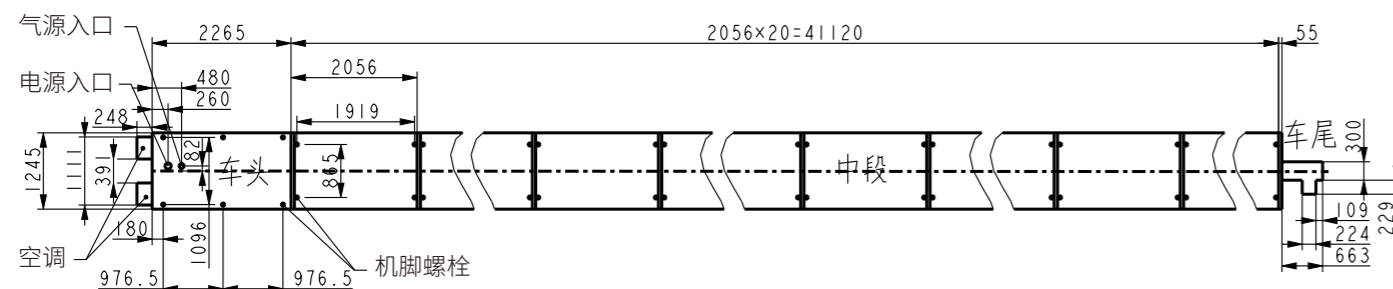


注:气源规格:5~7bar, 管子通径 Ø12;
电源规格:AC380V, 装机功率173.2KW。

技术规格和尺寸图

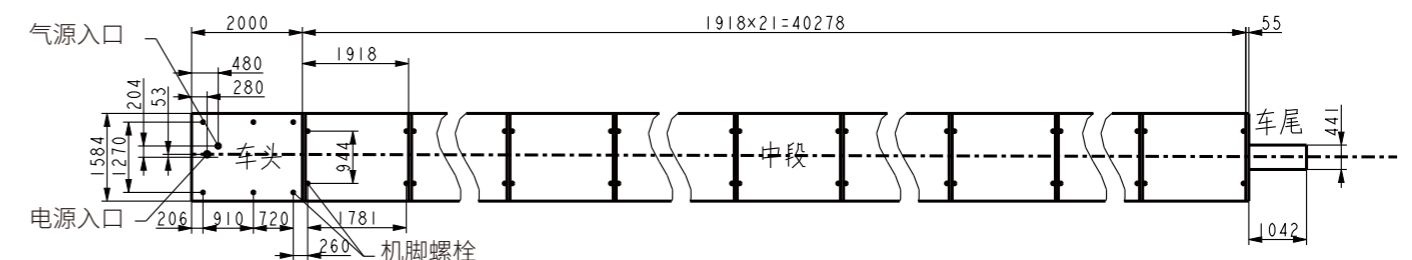
SPECIFICATION&DIMENSIONS

序号 Name	技术参数 Technical parameters
控制系统 Control System	PLC 控制 PLC control
适用纤度 Applicative Fineness	940~2520dtex (锦纶、涤纶) 940~2520dtex (polyamide, polyester)
锭子 Spindle	规格: Ø230/Ø250/Ø280 标配型: Ø230mm Type: Ø230/Ø250/Ø280 Standard Mode: Ø230mm
锭数 Number of Spindle	标准型: 10锭/节, 最大200锭 Standard Type: 10 spindle / section max 200 spindles
锭距 Spindle Gauge	400mm
锭速 Spindle Speed	4000~11000 r/min
捻度 Twisting Range	67~1375T/m
捻向 Twisting Direction	S或Z捻 S or Z twist
内纱张力器 Tyarn Tensioner	磁滞张力器 Magneric-lag Tensioner
供纱筒管尺寸 (直径×长度) Size of Yarn Supply Bobbin(Diameter×Length)	(Ø54~Ø110)×(200~300)
卷取筒管尺寸 Size Of Winding Bobbin	(Ø70~Ø90)×290±2
卷绕动程 Winding Traverse	254mm
卷取直径 Winding Diameter	最大Ø350mm 350mm at maximum
供纱直径 Yarn Supply Diameter	230型: 最大Ø230mm 230mm at maximum
装机功率 Installation Power	最大215kW 215kW at maximum
启动方式 Starting Mode	软启动 Soft Starting
卷绕角 Winding Angle	15°~ 25°直接设定 (无级可调) 15°~ 25° Direct Set (Regulation without Level)
引纱线速 Leading Speed	8~60m/min
穿纱气压 Threading Pressure	4.0±0.5bar



注:气源规格:5~7bar, 管子通径Ø12;
电源规格:AC380V, 装机功率210KW。

序号 Name	技术参数 Technical parameters
控制系统 Control System	PLC 控制 PLC control
适用纤度 Applicative Fineness	940~2520dtex (锦纶、涤纶) 940~2520dtex (polyamide, polyester)
锭子 Spindle	规格: Ø230/Ø250/Ø280 标配型: Ø230mm Type: Ø230/Ø250/Ø280 Standard Mode: Ø230mm
锭数 Number of Spindle	标准型: 8锭/节, 最大168锭 Standard Type: 8 spindle/ section, max 168 spindles
锭距 Spindle Gauge	450mm、500mm, 标准型: 450mm 450mm、500mm, standard Mode: 450mm
锭速 Spindle Speed	4000~11000 r/min
捻度 Twisting Range	67~1375T/m
捻向 Twisting Direction	S或Z捻 S or Z twist
内纱张力器 Tyarn Tensioner	磁滞张力器 Magneric-lag Tensioner
供纱筒管尺寸 (直径×长度) Size of Yarn Supply Bobbin(Diameter×Length)	(Ø54~Ø110)×(200~300)
卷取筒管尺寸 Size Of Winding Bobbin	(Ø70~Ø90)×290±2
卷绕动程 Winding Traverse	254mm
卷取直径 Winding Diameter	最大Ø350mm 350mm at maximum
供纱直径 Yarn Supply Diameter	230型: 最大Ø230mm 230mm at maximum
装机功率 Installation Power	最大179.12kW 179.12kW at maximum
启动方式 Starting Mode	软启动 Soft Starting
卷绕角 Winding Angle	15°~ 25°直接设定 (无级可调) 15°~ 25° Direct Set (Regulation without Level)
引纱线速 Leading Speed	8~60m/min
穿纱气压 Threading Pressure	4.0±0.5bar

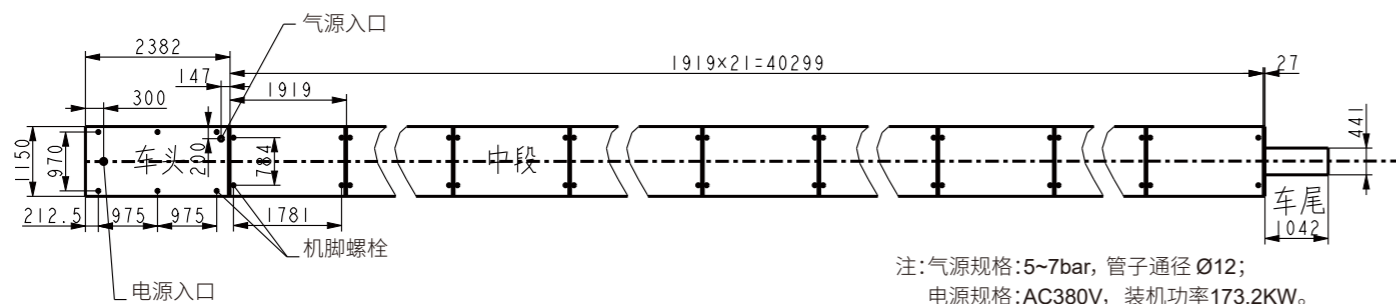


注:气源规格:5~7bar, 管子通径Ø12;
电源规格:AC380V, 装机功率176KW。

技术规格和尺寸图

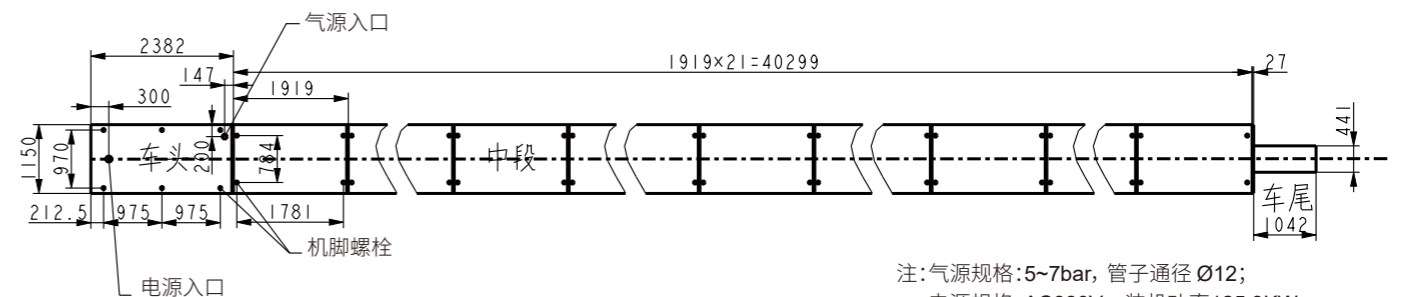
SPECIFICATION&DIMENSIONS

序号 Name	技术参数 Technical parameters
控制系统 Control System	PLC控制 PLC control
适用纤度 Applicative Fineness	940~2520dtex (锦纶、涤纶) 940~2520dtex (polyamide, polyester)
锭子 Spindle	规格: Ø230/Ø250 单电机独立驱动, 标配型Ø230mm。 Type: Ø230/Ø250 Single Motor with Independent Drive, Standard Mode: Ø230mm
锭数 Number of Spindle	标准型: 8锭/节, 最大 168锭 Standard Type: 8 spindle/ section, max 168 spindles
锭距 Spindle Gauge	450mm
锭速 Spindle Speed	3000~7000 r/min
捻度 Twisting Range	78~921 T/m
捻向 Twisting Direction	S或Z捻 S or Z twist
内纱张力器 Tyarn Tensioner	磁滞张力器 Magneric-lag Tensioner
供纱筒管尺寸 (直径×长度) Size of Yarn Supply Bobbin(Diameter×Length)	(Ø54~Ø110)×(200~300)
卷取筒管尺寸 Size Of Winding Bobbin	(Ø70~Ø90)×290±2
卷绕动程 Winding Traverse	254mm
卷取直径 Winding Diameter	最大 Ø350mm 350mm at maximum
供纱直径 Yarn Supply Diameter	230型: 最大 Ø230mm 230mm at maximum
装机功率 Installation Power	最大 173.2kW 173.2kW at maximum
启动方式 Starting Mode	软启动 Soft Starting
卷绕角 Winding Angle	15°~ 25° 直接设定 (无级可调) 15°~ 25° Direct Set (Regulation without Level)
引纱线速 Leading Speed	10~70m/min
穿纱气压 Threading Pressure	4.0±0.5bar



注:气源规格:5~7bar, 管子通径 Ø12;
电源规格:AC380V, 装机功率173.2KW。

序号 Name	技术参数 Technical parameters
控制系统 Control System	PLC控制 PLC control
适用纤度 Applicative Fineness	940~2520dtex (锦纶、涤纶) 940~2520dtex (polyamide, polyester)
锭子 Spindle	规格: Ø230/Ø250Ø280 标配型: Ø230mm Type: Ø230/Ø250Ø280 Standard Mode: Ø230mm
锭数 Number of Spindle	标准型: 8锭/节, 最大 120锭 Standard Type: 8 spindle/ section, max 120 spindles
锭距 Spindle Gauge	450mm、500mm
锭速 Spindle Speed	2000~7000 r/min
捻度 Twisting Range	50~800 T/m
捻向 Twisting Direction	S或Z捻 S or Z twist
内纱张力器 Tyarn Tensioner	钢球重力式 Magneric-lag Tensioner
供纱筒管尺寸 (直径×长度) Size of Yarn Supply Bobbin(Diameter×Length)	(Ø54~Ø110)×(200~300)
卷取筒管尺寸 Size Of Winding Bobbin	(Ø70~Ø90)×290±2
卷绕动程 Winding Traverse	254mm
卷取直径 Winding Diameter	最大 Ø300mm 300mm at maximum
供纱直径 Yarn Supply Diameter	230型: 最大 Ø230mm 230mm at maximum
装机功率 Installation Power	最大 125.3kW 125.3kW at maximum
启动方式 Starting Mode	软启动 Soft Starting
卷绕角 Winding Angle	15°~ 25° 直接设定 (无级可调) 15°~ 25° Direct Set (Regulation without Level)
引纱线速 Leading Speed	10~70m/min
穿纱气压 Threading Pressure	4.0±0.5bar



注:气源规格:5~7bar, 管子通径 Ø12;
电源规格:AC380V, 装机功率125.3KW。