

Become an agile and international company!  
成为敏捷化的国际性公司!

**浙江日发纺织机械股份有限公司**  
ZHEJIANG RIFA TEXTILE MACHINERY CO.,LTD

Add: No.88 Woxi Avenue, Meizhu Industrial Zone,  
Xinchang, Shaoxing, Zhejiang, China (312500)  
地址: 浙江省绍兴市新昌县梅渚工业区沃西大道88号

**山东日发纺织机械有限公司**  
SHANDONG RIFA TEXTILE MACHINERY CO.,LTD

Add: North of Songgui Road & West of Zhonghua Road,  
Xuying, High-tech Industry Development Zone, Liaocheng,  
Shandong, China(252000)  
地址: 山东省聊城市高新技术产业开发区许营镇中华路西、松桂路北  
电话(Tel): 400-999-8008 / 86-635-2999515  
传真(Fax): 86-635-8516735  
www.rifatm.com



本样本仅供参考，不作为技术验收的依据。  
为提高产品质量，本公司保留更改规格之权力，恕不另行通知。  
This sample is used for reference only and is not serving as a basis for technical acceptance.  
For the purpose of improving product quality, our company reserves the right to change product specifications without notice.



**WEAVING Solutions**

织造解决方案

喷水织机

WATER JET LOOM



## 关于日发纺机

浙江日发纺织机械股份有限公司成立于2002年，注册资金6948.7万。公司系国家重点高新技术企业、国家机械工业重点骨干企业、国家863计划CIMS工程示范企业、全国CAD应用工程示范企业、中国纺织机械协会副会长单位。现旗下控股山东日发纺织机械有限公司、安徽日发纺织机械有限公司、浙江日发纺机技术有限公司。

公司以成为“敏捷化的国际性公司”为愿景，以“为用户提供智能纺织装备系统解决方案，并协助用户逐步实现数字化工厂梦想”为使命，秉承“质量、创新、快速反应”的核心价值观，致力于机电行业的“数字科技”，已成为国内外享有高知名度的纺织装备生产企业。二十几年来已成功开发了清梳联、并条机、转杯纺纱机、喷气涡流纺纱机、倍捻机、直捻机、假捻变形机、精密并纱（络筒）机、自动穿经机、喷气织机、喷水织机、剑杆织机、毛巾织机、特种织机、针织圆机、无缝内衣机、袜机、非织造布设备等系列的上百种产品，能够为行业提供纺纱、前准备、织造、非织造等解决方案，涉及纺织行业的各个领域。产品遍及全国各地，并销往全球30多个国家和地区，在各个行业的市场占有率位居前列。

日发纺机正致力于创造崭新的“数字科技”理念，在未来的整机生产中，建立“人流、物流、信息流”的互动平台，实现科技、环境、制造的和谐统一。铸就“信息化、敏捷化、国际化”的纺织机械装备制造生产基地。

山东日发纺织机械有限公司系日发纺机全资子公司，是“制造业单项冠军示范企业”“国家级工业设计中心”。致力于研发、制造具有国际水准的各类无梭织机。公司主要产品为系列喷气织机、喷水织机、剑杆织机、毛巾织机、自动穿经机，三十多年的专业经验使山东日发纺机成长为我国无梭织机的主要研发、制造基地。



## About Us

Zhejiang Rifa textile machinery co., ltd. is founded in 2002 with a registered capital of 69.487 million yuan. The company is a China national key high-tech enterprises, a key enterprise of the China national machinery industry, a demonstration enterprise of both China national 863 program CIMS engineering and China national CAD application engineering, a China national torch plan high-tech enterprise, and a vice president unit of China textile machinery association. It now holds three subsidiaries: Shandong Rifa textile machinery co., ltd., Anhui Rifa textile machinery co., ltd. And Zhejiang Rifa textile machinery tech co., ltd.

With the vision of “become an agile and international company”, the mission of “Provide users with intelligent textile equipment system solutions, and help users gradually realize the dream of a digital factory” and the core values of “quality, innovation and rapid response”, Zhejiang Rifa Textile Machinery Co., Ltd. is devoted to the area of “digital technology” in mechanical and electrical industry, and has become a well-known textile equipment manufacturer with excellent reputation at home and abroad. For over twenty years, the company has successfully developed four solutions such as spinning, fiber preparation, weaving and non-woven, including blow-room machine, draw frame, rotor spinning machine, air jet vortex spinning machine, two-for-one twister machine, twister machine for tire cord, false-twist texturing machine, precise winding machine (precise rewinding machine), automatic warp drawing machine, air jet loom, water jet loom, rapier loom, terry towel loom, specific loom, circular knitting machine, seamless knitting machine, hosiery machine and non-woven equipment, and hundreds of machines. These products have been distributed to all areas around China and sold to more than 30 foreign countries and regions with a leading market share in each respective industry.

RIFA is devoting itself to create a whole new theory of digital technology, establishing an interactive platform of “people flow, material flow and information flow”, realizing harmony and unify of science and technology, environment and manufacturing, and aiming to become a manufacturing base of “informatization, agility and internationalization”.

Shandong Rifa Textile Machinery Co., Ltd. is a wholly owned subsidiary of Zhejiang Rifa Textile Machinery Co., Ltd., a “Manufacturing Single Champion Demonstration Enterprise” and a “National Industrial Design Center”. It is devoting itself to research and manufacture top grade all kinds of shuttleless looms. air jet loom, water jet loom, rapier loom, terry towel loom, automatic warp drawing machine. More than 30 years of experience has it grown to be the main research and manufacture base of shuttleless weaving machines.



高速高效

“RFJW10”机架构造刚度韧度优化加强，引纬打纬更加稳定，使高速性能表现卓越。

High Speed & High Efficiency

Highly strengthened frames of RFJW10 looms ensures stable insertion and excellent performance.

通用广泛

新型陶瓷喷嘴提升织机高速状态下引纬的稳定性；缩短织前布经路，提升高密度织造的稳定性。使织机能从容应对细支纱到粗支纱、窄幅到宽幅及不平衡组织的织物。

Wide Weaving Range

New type ceramic nozzles can enhance the stability of insertion during high speed running. It is easy for this model looms to weave finest and thickest yarn, narrow and wide fabrics, high pick density and double layer fabrics.



操作简便

“RFJW10”充分考虑人机工程，力求操作舒适简便，降低经位置线，提高操作工的舒适度，通过高清彩色触摸屏的人机对话界面，基本实现全部设定的简便化，发挥出卓越的操作性能。

Easy Operation

Ergonomics is fully considered on RFJW10 looms. Reducing warp location line makes operating more comfortable and easy. Actualize man-machine conversation through high clear colored touching screen.

品质保障

“RFJW10”强化关键零部件，优选供应商，保证整机品质，并具有完善的全方位的售前、售中和售后服务体系。

Reliable Quality

Reliable quality of parts and machine, perfect service off pre-sales, sales and after sales.

环境保护

日发纺机积极致力于环境保护，“RFJW10”利用虚拟样机技术，通过优化结构，比市场现有织机能降耗降低5%，振动降低25%。

Environmental Protection

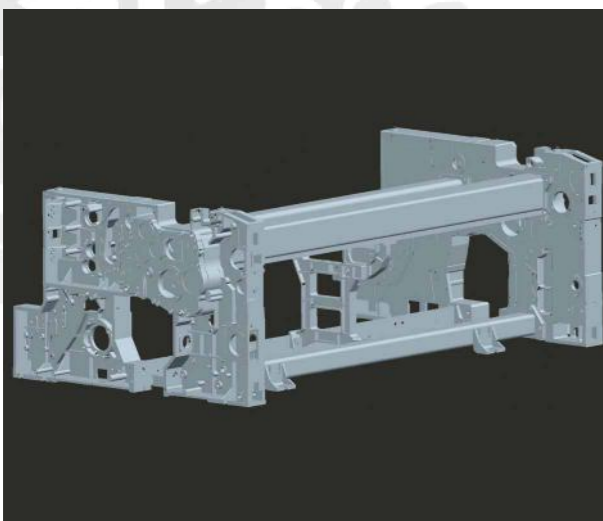
Rifa applies to environmental protection, through the technology of virtual prototype 5% power consumption can be saved and 25% vibration can be reduced.

RFJW系列喷水织机秉承我司RFJA系列喷气织机的技术，以节能、低耗、高速、高效与广泛的品种适应性为设计理念而开发的一款高速喷水织机。该机通过全新立体设计和计算机解析组合，并利用虚拟样机技术设计了引纬、开口和打纬机构，使织机在同等织造条件下比国内同类产品振动低10%以上，能耗低5%以上，同时在高速适应性与品种适应性上表现优异，是目前市场上性能比优秀的产品之一。其主要特点如下：

- 优越的高速性能
- 良好的可操作性
- 可靠的品质保障
- 广泛的产品适应性
- 优良的环境保护措施
- 国内首创的织造专家系统

RFJW series Water Jet looms succeed the technology of RFJA air jet looms, it's designed for high speed, low consumption and wide weaving range. Newly designed by three-dimensional designing software and computer analytic combination. The weft insertion, shedding and beating-up mechanism were designed by the technology of virtual prototype. More than 10% vibration can be reduced and more than 5% power can be saved than normal looms. It shows excellent performance on flexibility for high speed and wide weaving versatility. RFJW water jet loom is one of the best choices for economic weaving. Its main features are as follows:

- High speed performance
- Easy operation
- Reliable quality warranty
- Wide wovenable range
- Perfect environmental protection
- The first weaving navigation system in China



**坚固强韧的机架**

墙板采用整体式，送经墙板与侧墙板一体铸造成型，箱型结构的墙板与加强设计的横梁组合构成强韧的机架，并增加中间支撑，刚性提升的同时，有效防止了共振并大幅降低了地面震动和运行噪音，使织机的高速运转更加稳定。

**Strong Frame Structure**

Let-off frame and side frame are cast together; box type side frames and strengthened chest beam constitute the machine frame. And adding center supports to increase the rigidity and reduce the vibration & sounds.

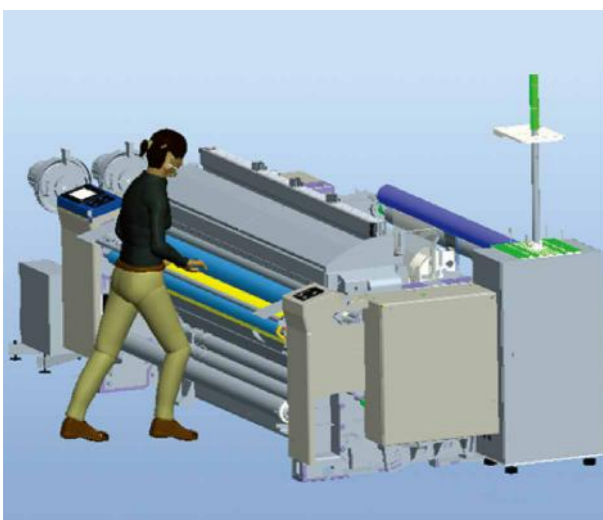


**WBS纬纱制动器**

大幅减少引纬结束时发生的峰值张力，实现高速状态下强捻织物起皱均匀。有效防止加工丝织造过程中产生紧纬和松纬。

**WBS Weft Braker**

WBS can much reduce the crest value of tension, this can ensure well-proportioned wrinkle of high twisting fabrics, and can prevent tight or loose weft.



**良好的操作舒适性**

设计理念以人为本，充分考虑人机工程，降低经位置线，提高操作者的舒适性，提高工作效率。此外，重心的下移亦有益于织机高速运转。

**自动对织口**

采用自动倒转对合织口，织机停车修复后，再启动时的织口自动对合，使操作更加简便，并能大幅提高工作效率。

**Comfortable Operation**

The design idea is people-oriented, fully considered the ergonomics, reduced warp line position, improved the comfort of the operator and improved the working efficiency. In addition, the lower center of gravity is also beneficial to looms' high speed operation.

**Automatic Cloth-fell Aiming**

Adopts automatic reverse to aim cloth-fell. Cloth-fell can be adjusted well automatically when the machine is restarted; this can make the operating simpler and increase the work efficiency.

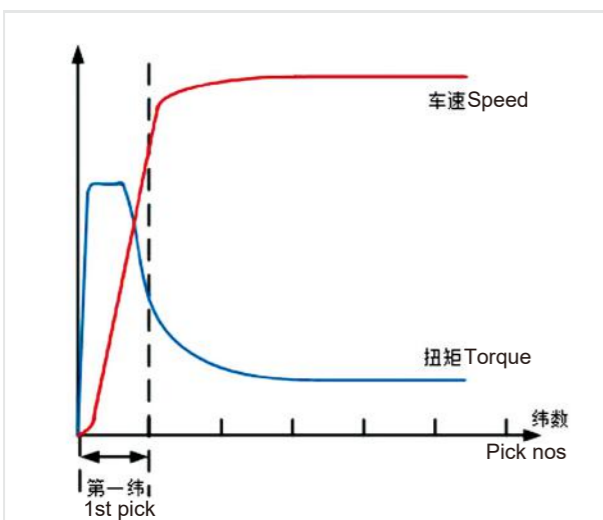


**倾斜式箱保护**

采用布路径倾斜式机构，能够有效控制织口跳动，提高不平衡组织物织造质量。

**Inclined reed protection**

It adopts the fabric path inclined mechanism, can effectively control jitter of shedding and improve the weaving quality of unbalanced weave fabrics.



**超启动马达**

采用先进的超启动马达，使织机启动时可输出高扭矩，防止停车档及第一纬纬纱的松弛。通过直接连在曲轴上的大容量电磁制动器，可以实现织机准确定位停车。

**Super Motor**

Adopts advanced super motor, this kind of motor can offer high torque when the machine is started to avoid any marks and weft loop of first pick. The machine can be braked accurately through the electromagnetism clutch which is connected directly on crank shaft.



**档子调整功能**

停车档功能操作直观简便，送经和卷取可分开设置，具有常规设定、按时间补正、开车后补正三种方式。

**Function of Mark Adjustment**

The operation of stop-mark preventing is simple; Let-off and take-up can be set separately; Three kinds of methods are available: Normal setting, corrections on time and corrections of after-start.



#### 高清彩色人机交互界面

采用高清彩色触摸式LED背光屏作为人机交互界面, 使用户轻松简便的实现织机及储纬器等工作参数的设定, 以及选择特定功能, 分析生产报表和检查报警信息等多种功用。并具有无线用户卡功能, 赋予不同操作人员不同权限。

#### Man-machine Conversation Panel

Equipped with high clear colored touching LED screen as man-machine conversation panel, operators can set parameters of loom and accumulators easily, also can choose special functions to check production data and others.

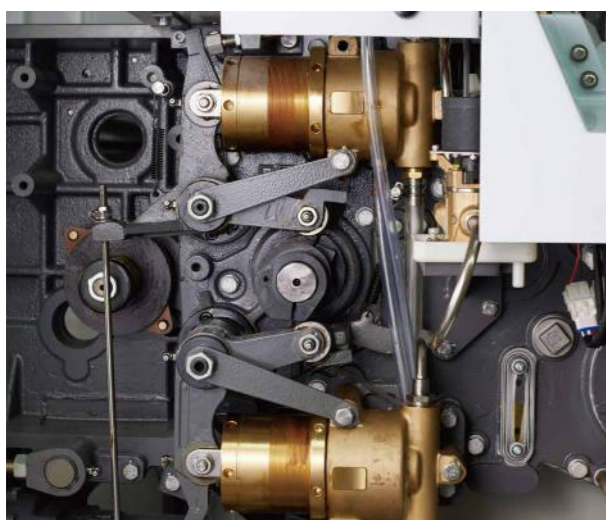


#### 集中润滑装置

采用集中润滑装置对于织机的常规润滑点实现定量自动润滑, 并且根据不同位置的实际润滑需求实现不同的润滑周期设定。

#### Centralized Lubrication Unit

The loom adopts centralized lubrication unit which can offer automatic and quantificational lubrication for every lubricate point.



#### 水泵

采用新型高性能水泵, 提高喷射水的集束性, 从而提升投纬能力, 单泵和双泵不同配置, 可适应广泛的织造品种。

#### Water Pump

Adopts new type water pump which can increase the property of water bundling. Two options of single and double pumps are able to weave different fabrics.

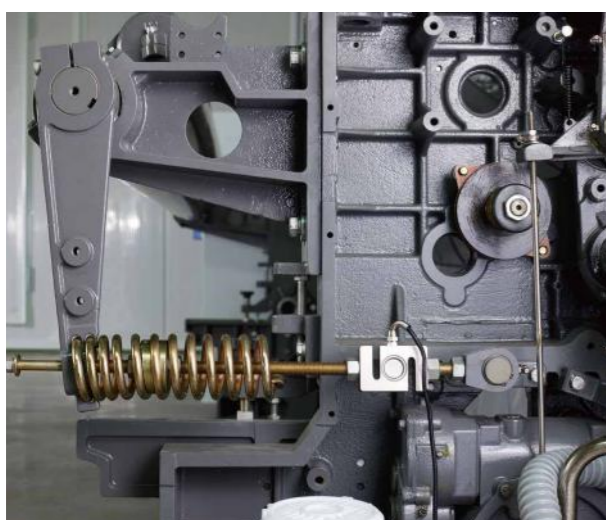


#### 多喷配置

采用双稳定器的喷嘴提升引纬的集束性, 通过减小喷嘴的直径缩短间距, 有利于缩小相邻喷嘴的引纬效果差异及实现多喷配置。

#### Multi Main Nozzles

Adopts the nozzles with double stabilizers which can increase the bundling of insertion. By reducing the out-diameter of the nozzle and shortening the distance, to reduce the difference of the weft insertion of the adjacent nozzles and realize the multi main nozzle configuration.



#### 重视织物品质的送经系统

经强化的双辊送经, 不仅适用于轻薄到超厚重的织物, 还可提升织物的织造品质。ELO电子送经系统配备反弹装置, 有效防止停车档。

#### Let-off Device

Adopts strengthen double-roller let-off system, not only can weave light and heavy fabrics, but also can improve the fabric quality. Electronic let-off is equipped with rebound device to prevent stop marks.



#### 上下双经轴

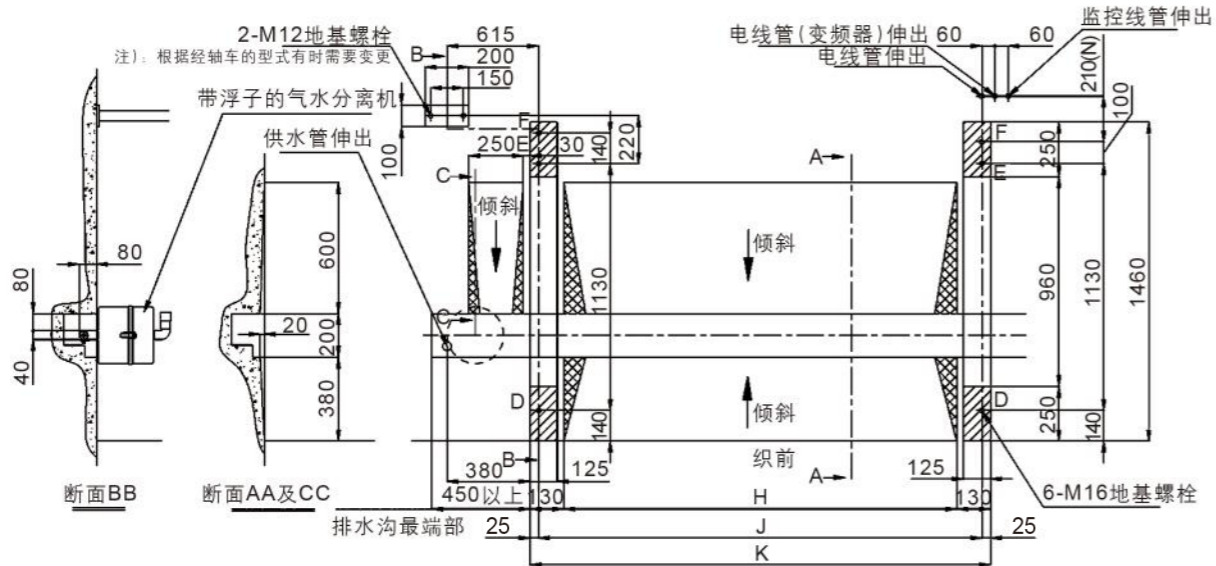
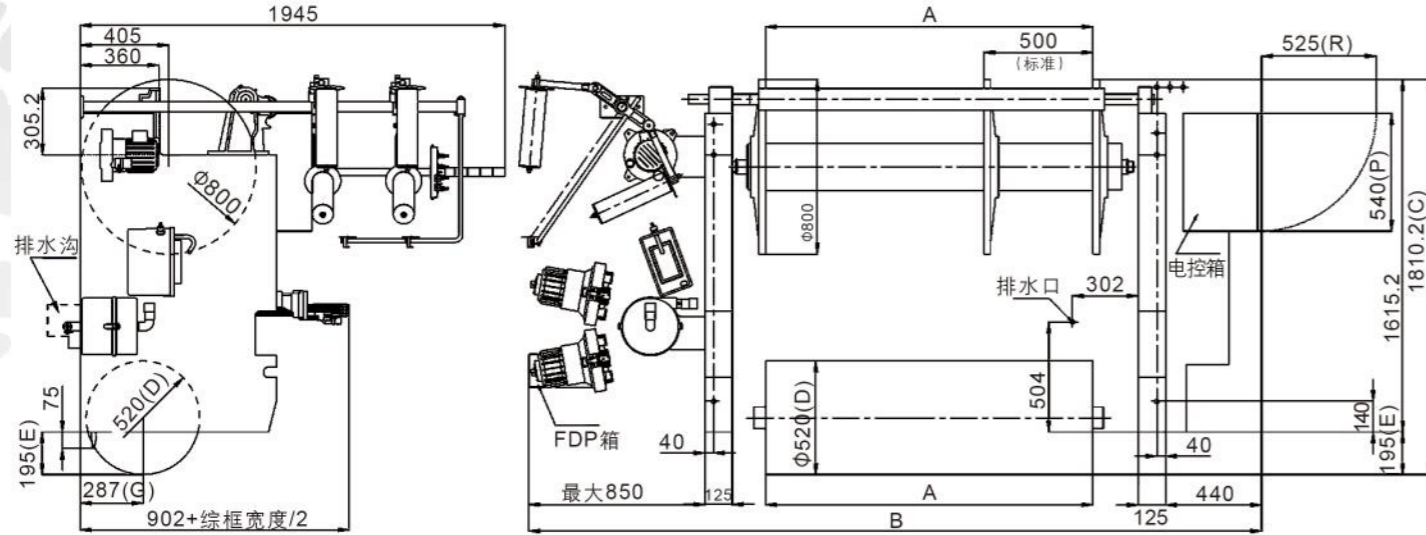
上下双经轴结构, 可以配置宽幅织机, 后端配备可拆卸脚踏板, 方便操作。

#### Top Beam

Top beam system is available for wide looms; equipped with demountable foot plate on back side, it is easy for workers to operate.

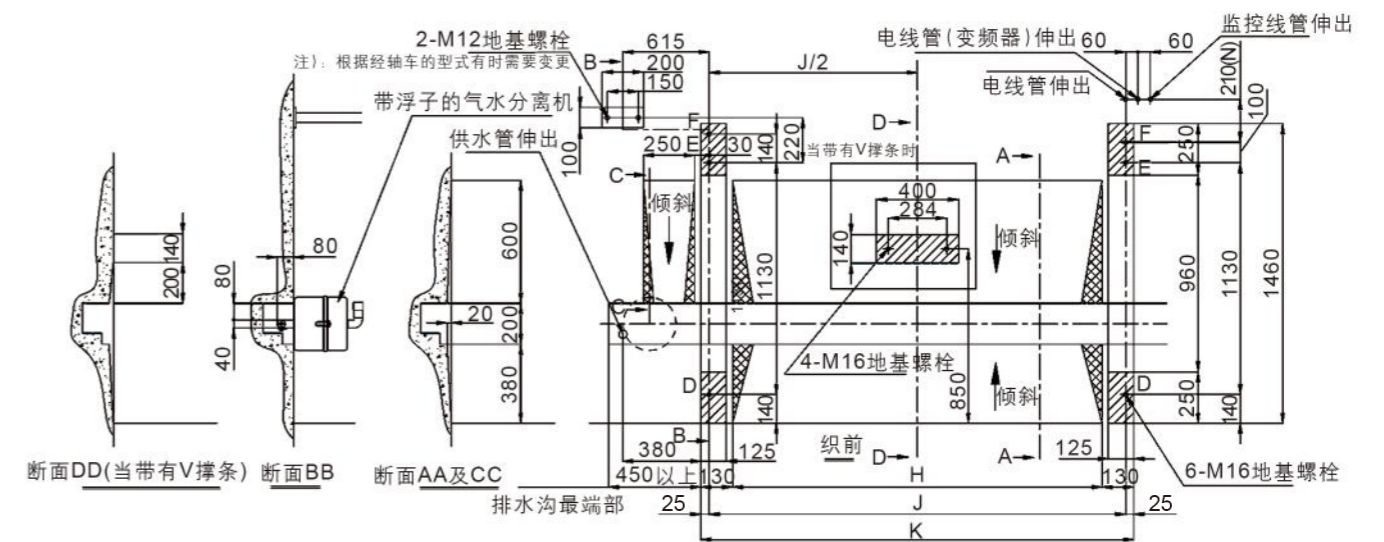
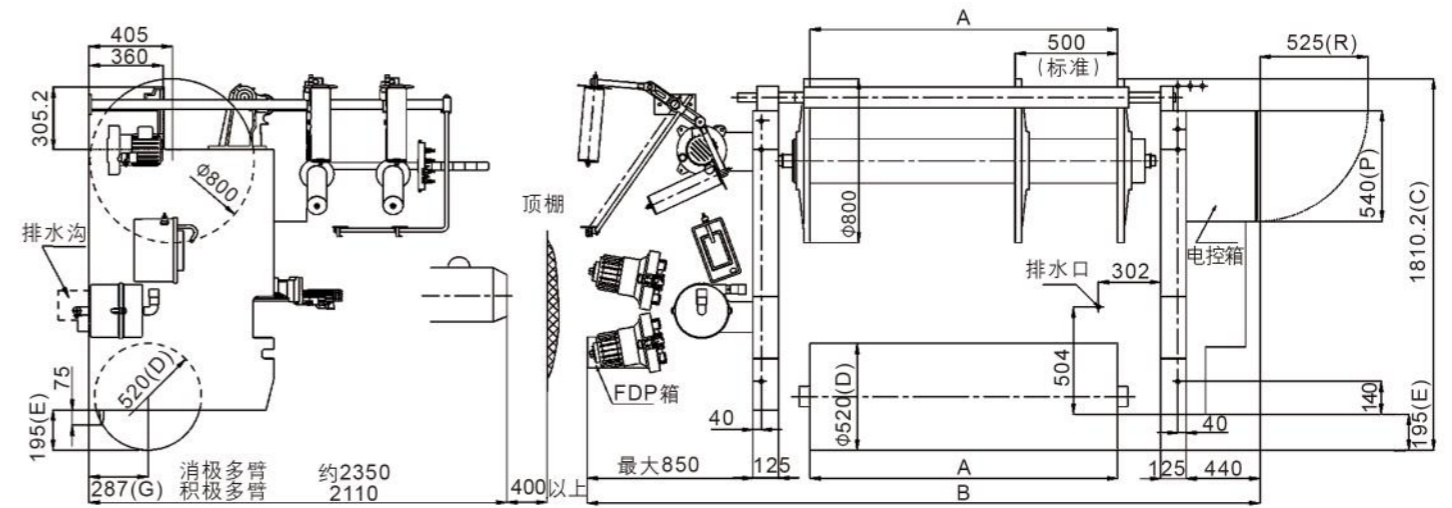
尺寸图  
DIMENSIONS

RFJW10平开口 (边盘800)  
RFJW10 Plain shedding (Flange dia 800mm)



箱幅宽 Width	A	B	H	J	K
150cm	1500	3400	1850	2060	2110
170cm	1700	3600	2050	2260	2310
190cm	1900	3800	2250	2460	2510
210cm	2100	4000	2450	2660	2710
230cm	2300	4200	2650	2860	2910
280cm	2800	4700	3150	3360	3410
300cm	3000	4900	3350	3560	3610
320cm	3200	5100	3550	3760	3810
340cm	3400	5300	3750	3960	4010
360cm	3600	5500	3950	4160	4210

RFJW10凸轮、多臂开口 (边盘800)  
RFJW10 Cam, dobby shedding (Flange dia 800mm)



箱幅宽 Width	A	B	H	J	K
150cm	1500	3400	1850	2060	2110
170cm	1700	3600	2050	2260	2310
190cm	1900	3800	2250	2460	2510
210cm	2100	4000	2450	2660	2710
230cm	2300	4200	2650	2860	2910
280cm	2800	4700	3150	3360	3410
300cm	3000	4900	3350	3560	3610
320cm	3200	5100	3550	3760	3810
340cm	3400	5300	3750	3960	4010
360cm	3600	5500	3950	4160	4210

技术规格  
SPECIFICATION

项目		规格	选配件
箱幅	公称箱幅	150、170、190、210、230、280、300、320、340、360cm	
	有效箱幅	公称箱幅减0-70cm	
纬纱选择		2色自由选纬	
动力	启动方式	超启动马达驱动	
	马达功率	2.7kW、3.0kW、3.7kW、4.5kW	
	运转操作	通过电磁制动器直接控制定位停车 按钮操作（准备、运转、停止、正向点动、反向点动、倒转1圈后定位停车） 自动对织口	
打纬		曲柄式多箱脚踏纬机构。油浴润滑方式	
引纬	泵	柱塞式弹簧加压方式	
	喷嘴	环形喷嘴稳压器方式（陶瓷喷嘴）	
	测长储纬	振动电动鼓筒测长储纬装置（2色）	WBS纬纱制动器 电动式纬纱拉回装置
开口	曲柄开口：4片综框、6片综框		
	凸轮开口：上置式积极凸轮10片综框		
	多臂开口：上置消极16片综框、上置积极多臂16片综框		
	大提花开口		
送经	ELO电动送经、MLO机械送经		
	最大张力	2500N、5000N	
	后梁	标准	
	边盘直径	800mm	914mm、1000mm
卷取	ETU电动卷取、MTU机械卷取		
	布卷径	520mm	
	布卷经路	S1形、S2形	
供纱架		落地式横向4纱筒（2色）	
布边装置		行星齿轮式	
纱端处理		锭子假捻方式	
剪纬器		机械式剪纬器	
边撑		上置式双边撑杆双环	
脱水		微缝管吸入方式（高压鼓风机370W）	
停车装置	断纬	OPF光电式探纬器	
	显示停车原因	显示屏显示信息	
		多功能4灯式停车显示灯	
自动化	主控	自动控制、故障排除、自我诊断功能	
		运转信息的显示、维修信息的显示等	
	网络	集中联网、织机监控系统	

Item		Specifications	Options
Width	Reed Width	150, 170, 190, 210, 230, 280, 300, 320, 340, 360cm	
	Working Width	Reed width minus 0-70cm	
Weft Color		2 color at will	
Power	Start By	Super motor	
	Motor Capacity	2.7kW, 3.0kW, 3.7kW, 4.5kW	
	Working	Brake through electromagnetism clutch	
Buttons (prepare, start, stop, forwarder inching, reverse inching, reverse one circle)			
		Automatic pick finding	
Beating		Crank with multi-sley, bath oil	
Insertion	Pump	Plunger pump	
	Nozzle	Annular nozzle manostat (ceramics jet needle)	
	Accumulator	Vibration electric drum accumulator (2 color)	WBS Electric weft Drawing device
Shedding Device	Crank: 4 heald frames, 6 heald frames		
	Cam: up-mounted cam, max 10 heald frames		
	Dobby: Up-mounted negative dobbie Up-mounted positive dobbie max 16 heald frames		
	Jacquard		
Let - off	ELO, MLO		
	Max Tension	2500N, 5000N	
	Back-roller	Standard	
	Flange Dia	800mm	914mm、1000mm
Take - up	ETU, MTU		
	Cloth Dia	520mm	
	Cloth Route	Type S1, Type S2	
Cone Stand		4 cone stand, 2 color	
Selvage		Planet gear	
Handling of Yarn End		Spindle false twisting	
Weft Cutter		Mechanical	
Temple		Up-mounted double temples shaft with double rings	
Dehydration		Tiny crevice pipe suction (high pressure blowing Machine 370W)	
Stop motion	Weft Stop	OPF photoelectric sensor	
	Display of Stop Reasons	Screen panel	
		Multi-function 4-lighgt indicating	
Automatic	Main Control	Auto control, fault remove, itself diagnosis	
		Showing of working info and maintenance data	
	Net	Centralizing net connection, loom supervisory system	



#### 引纬稳定

“RFJW05”整体式机架刚性好，引纬系统稳定，适合高速运行。

#### Stable weft insertion

The integral frame of "RFJW05" is featured at good rigidity and stable weft insertion system, which is suitable for high-speed operation.

#### 适应性广泛

喷嘴集束性高，有利于提高引纬效率，动程合理配置，适合织造织物的范围广泛。

#### Wide adaptability

The nozzle is featured at high bunching property, which is helpful to improve the weft insertion efficiency. The configuration of motion range is reasonable, and it is suitable for a wide range of weaving fabrics.

#### 质量控制

“RFJW05”整机平台装配，零部件严格控制，确保织机运行稳定。

#### Quality Control

"RFJW05" is assembled as a whole machine platform and parts are strictly controlled to ensure stable operation of the loom.

#### 智能化

“RFJW05”控制系统先进，可以设置定位停车，触摸屏参数设置便利。

#### Intelligence

Advanced "RFJW05" control system, which can set positioning stop, and touch screen parameter setting is convenient.

#### 绿色织造

日发纺机积极致力于绿色织造，“RFJW05”通过传动结构优化，使织机运转平稳，降低织机能耗。

#### Green Weaving

Rifa is actively committed to green weaving. "RFJW05" optimizes the transmission structure for smooth of loom running and reduction of energy consumption.

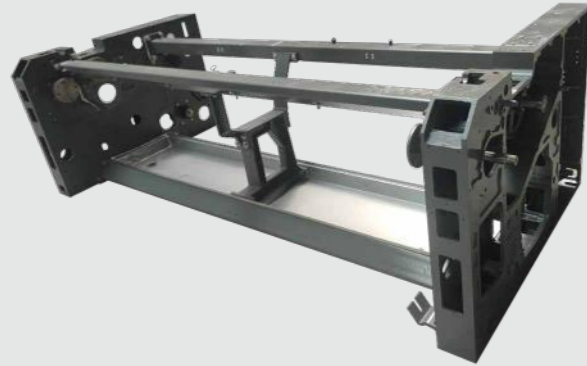
RFJW05系列喷水织机秉承日发纺机喷气织机等无梭织机的先进技术，以节能、低耗、高速、高效与广泛的品种适应性为设计理念而开发的一款中档喷水织机。通过对打纬机构的运行速度及加速度分析进行结构优化设计使织机在同等织造条件下有效降低振动。其主要特点如下：

- 良好的框架结构
- 丰富的配置
- 便利的操作性
- 积极推行绿色织造
- 织造适应性广
- 智能控制系统

RFJW05 series water jet looms serve as mid-range water jet looms that adopt the advanced technology of shuttleless looms such as Rifa air jet looms, and are developed with the design concept of energy saving, low consumption, high speed, high efficiency and being suitable for a wide range of varieties. The structure optimization design via analysis of the running speed and acceleration of beating up mechanism allows the vibration of the loom to be effectively reduced under the same weaving conditions. Its main features are as follows:

- Good frame structure
- Rich configuration
- Convenient operability
- Active promotion of green weaving
- Wide weaving adaptability
- Intelligent control system



**一体式框架**

采用箱式墙板, 辅助中间支撑, 有效提高整机的基础稳定性, 适合于织机的高速运转, 及降低织机的振动。

**Integrated frame**

It adopts box-type wallboard, assisted with intermediate support, which effectively improves the basic stability of the whole machine, and is suitable for the high-speed operation and reduction of vibration.

**电子卷取**

采用伺服控制, 配合高精度的机械传动, 能够有效提高卷布的张力均匀及减低织机的布面档子问题, 提高布面质量。

**Electronic take-up**

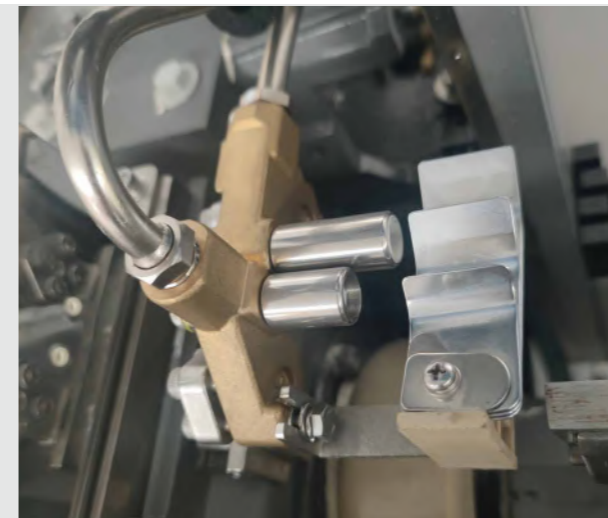
It adopts servo control, combined with high-precision mechanical transmission, which can effectively improve the evenness of the tension of rolled cloth, reduce the problem of the cloth marks of the loom, and improve the quality of cloth surface.

**电子送经**

采用伺服控制, 已经高经密度的张力反馈装置, 均匀的提供经纱织造张力, 减少布面疵点。

**Electronic Let-off**

It adopts servo control, the tension feedback device with high warp density can provide uniform warp weaving tension and reduce fabric defects.

**双喷结构**

新型陶瓷喷嘴, 有效提升引纬的集束性, 高低及前后调整方便, 产品试用范围广。

**Double Jet Structure**

The new ceramic nozzle can effectively improve the clustering of weft insertion, which is easy to adjust the height, front and back, and has a wide range of product use.

**直驱马达**

能够准确控制织机停车角度, 并且结合柔性控制, 能够有效减轻布面档子问题。传动结构简单, 取消离合器制动, 提高了织机维护的便利性。通过提高马达的运转效率, 能够实现15%左右的节能。

**Direct Drive Motor**

The direct drive motor can accurately control the stop angle of the loom, combined with flexible control, which can effectively reduce the problem of fabric covers. The transmission structure is simple, with clutch brake canceled, which improves the convenience of loom maintenance. By improving the running efficiency of the motor, it can save approx. 15% energy.

**智能化操作系统**

停车档功能操作直观简便, 送经和卷取可分开设置, 具有常规设定、按时间补正、开车后补正三种方式。

**Intelligent Operating System**

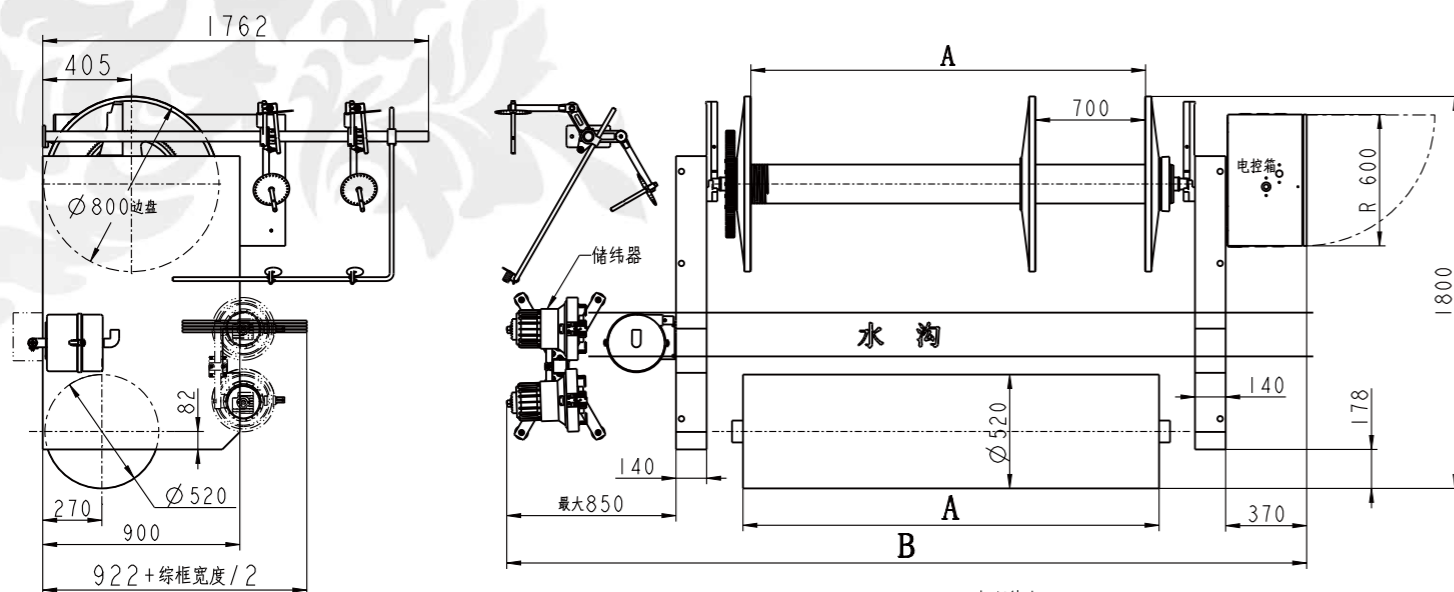
The anti-stop-mark function is intuitive and easy for operation. The let-off and take-up can be set separately, with three modes available, including routine setting, correction by time and correction after starting.

尺寸图

DIMENSIONS

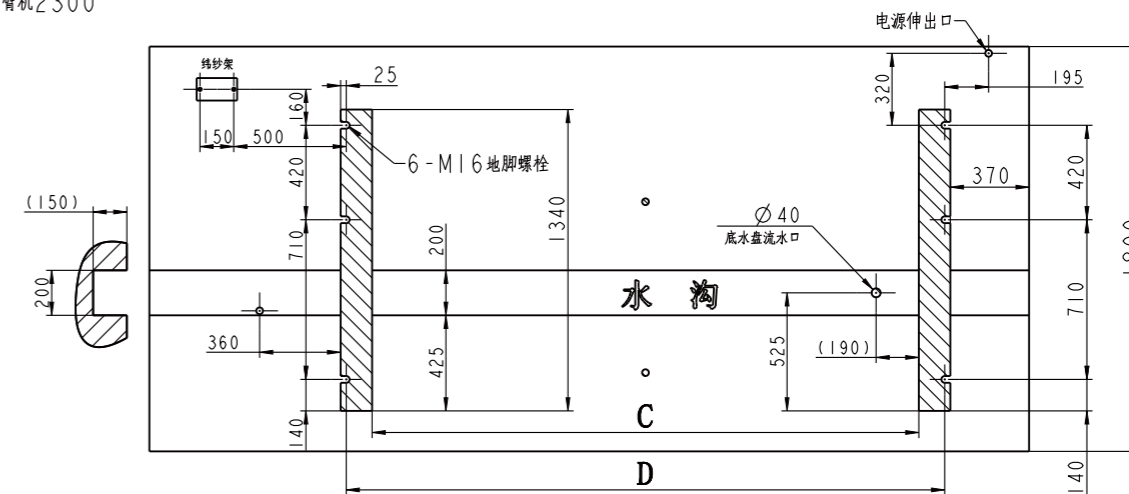
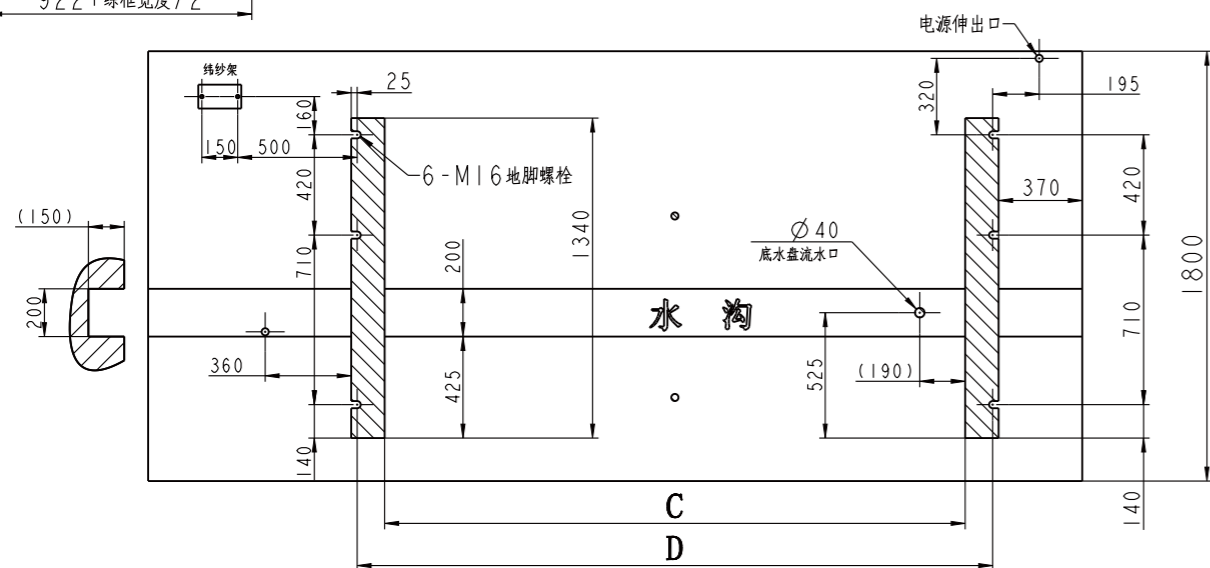
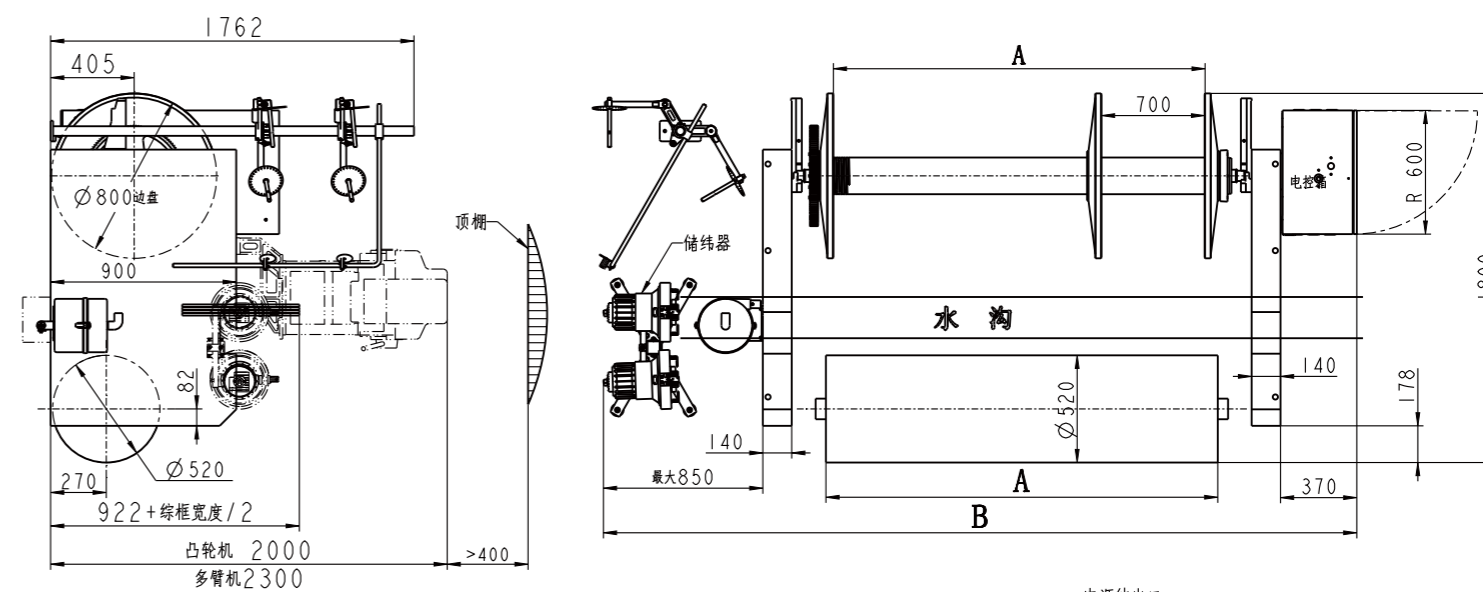
RFJW05平开口 (边盘800)

RFJW05Plain shedding (Flange dia 800mm)



RFJW05凸轮、多臂开口 (边盘800)

RFJW05 Cam, dobby shedding (Flange dia 800mm)



箱幅宽 Width	A	B	C	D
190cm	1900	3730	2230	2460
210cm	2100	3930	2430	2660
230cm	2300	4130	2630	2860
280cm	2800	4630	3130	3360
300cm	3000	4860	3330	3560
320cm	3200	5030	3530	3760
340cm	3400	5230	3730	3960
360cm	3600	5430	3930	4160

箱幅宽 Width	A	B	C	D
190cm	1900	3730	2230	2460
210cm	2100	3930	2430	2660
230cm	2300	4130	2630	2860
280cm	2800	4630	3130	3360
300cm	3000	4860	3330	3560
320cm	3200	5030	3530	3760
340cm	3400	5230	3730	3960
360cm	3600	5430	3930	4160

## 技术规格

## SPECIFICATION

项目		规格	选配件
箱幅	公称箱幅	190、210、230、290、320、340、360cm	
	有效箱幅	公称箱幅减0-70cm	
纬纱选择		2色自由选纬	
动力	启动方式	超启动马达驱动 / 直驱马达	
	马达功率	2.7kW、3.0kW、3.7kW、4.5kW	
	运转操作	通过电磁制动器直接控制定位停车 按钮操作（准备、运转、停止、正向点动、反向点动、倒转1圈后定位停车） 自动对织口	
打纬		曲柄式多箱脚打纬机构/直线打纬机构	
引纬	泵	柱塞式弹簧加压方式	
	喷嘴	环形喷嘴稳压器方式（陶瓷喷嘴）	
	测长储纬	振动电动鼓筒测长储纬装置（2色）	WBS纬纱制动器 电动式纬纱拉回装置
开口		曲柄开口：4片综框、6片综框	
		凸轮开口：上置式积极凸轮10片综框	
		多臂开口：上置消极16片综框、上置积极多臂16片综框	
		大提花开口	
送经		ELO电动送经	
	最大张力	2500N、5000N	
	后梁	标准	
	边盘直径	800mm	1000mm
卷取		ETU电动卷取	
	布卷径	520mm	
	布卷经路	S1形、S2形	
供纱架		落地式横向4纱筒（2色）	
布边装置		行星齿轮式	
纱端处理		锭子假捻方式	
剪纬器		机械式剪纬器	
边撑		上置式双边撑杆双环	
脱水		微缝管吸入方式（高压鼓风机370W）	
停车装置	断纬	OPF光电式探纬器	
	显示停车原因	显示屏显示信息	
		多功能4灯式停车显示灯	
自动化	主控	自动控制、故障排除、自我诊断功能	
		运转信息的显示、维修信息的显示等	
	网络	集中联网、织机监控系统	

Item		Specifications	Options
Width	Reed Width	190、210、230、290、320、340、360cm	
	Working Width	Reed width minus 0-70cm	
Weft Color		2 color at will	
Power	Start Mode	Super motor / Direct motor	
	Motor Capacity	2.7kW, 3.0kW, 3.7kW, 4.5kW	
	Working	Brake through electromagnetism clutch Buttons (prepare, start, stop, forwarder inching, reverse inching, reverse one circle) Automatic pick finding	
Beating		Crank multi-sley-bar beating mechanism/Lineal beating mechanism	
Insertion	Pump	Plunger pump	
	Nozzle	Annular nozzle manostat (ceramics jet needle)	
	Accumulator	Vibration electric drum accumulator (2 color)	WBS Electric weft Electric weft Drawing device
Shedding Device		Crank: 4 heald frames, 6 heald frames	
		Cam: up-mounted cam, max 10 heald frames	
		Dobby: Up-mounted negative dobbie Up-mounted positive dobbie max 16 heald frames	
		Jacquard	
		ELO	
Let - off	Max Tension	2500N, 5000N	
	Back-roller	Standard	
	Flange Diameter	800mm	1000mm
		ETU	
Take - up		ETU	
	Cloth Diameter	520mm	
	Cloth Route	Type S1, Type S2	
Cone Stand		4 cone stand, 2 color	
Selvage		Planet gear	
Handling of Yarn End		Spindle false twisting	
Weft Cutter		Mechanical	
Temple		Up-mounted double temples shaft with double rings	
Dehydration		Tiny crevice pipe suction (high pressure blowing Machine 370W)	
Stop motion	Weft Stop	OPF photoelectric sensor	
	Display of Stop Reasons	Screen panel Mult-function 4-lhgt indicating	
Automatic	Main Control	Auto control, fault remove, itself diagnosis	
		Showing of working info and maintenance data	
	Net	Centralizing net connection, loom supervisory system	



#### 配置丰富

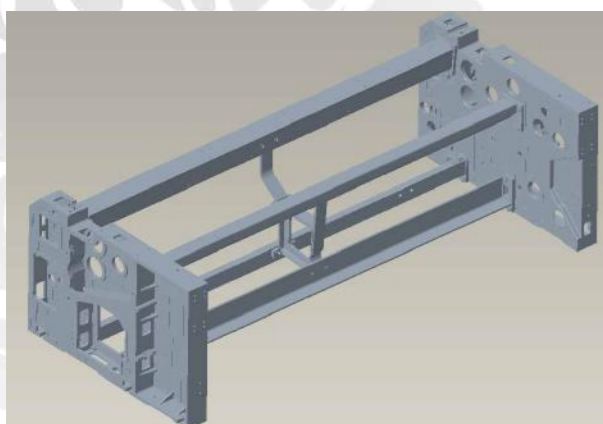
机械送经、机械卷取、电子送经、电子卷取、单泵双喷、单泵多喷、曲柄开口、凸轮开口、多臂开口、提花开口、机械式吸水马达、电子式吸水马达、普通马达、直驱马达

#### Varied configurations

Mechanical let-off and mechanical batching, Electronic let-off and electronic batching, Single pump and double jets, Single pump multiple jets, Crank shedding, Cam shedding, Dobby shedding, Jacquard shedding, Mechanical water sucking motor, Electronic water sucking motor, Ordinary motor, Direct-drive motor

RFJW03系列喷水织机，是一款适合轻薄及中等厚度织物织造的织机，借鉴日发其它喷水织机的开发经验，重新优化设计，使织机的织造速度和织造质量均有提升。该织机配置丰富，可以满足不同客户的织造需求，并且是一款高性价比的织机。

RFJW03 series water jet loom is suitable for weaving light and medium-thickness fabrics. Drawing on Rifa's experience in development of other water jet looms, the design is optimized, the weaving speed and quality of the loom are improved. The loom has varied configurations, it can meet the weaving needs of different customers and is a cost-effective loom.

**加强框架**

通过对原有框架机构改进,提高了整机的机架刚性。

**Reinforced frame**

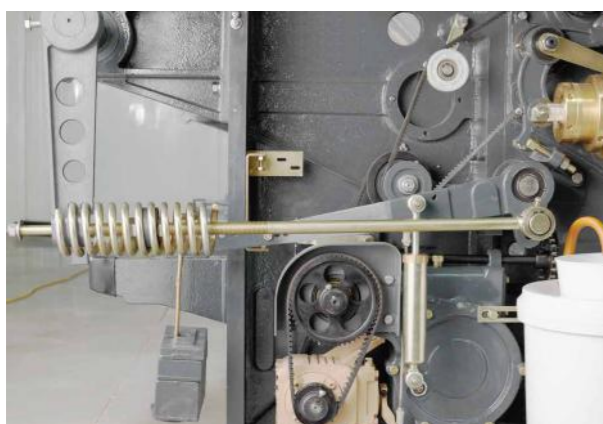
By improving the original frame mechanism, the frame rigidity of the whole machine is improved.

**精密水泵装置**

高精密的引纬装置,根据客户织造特点,合理配置引纬系统,使织机能够达到高速高效的织造需求。

**Precision water pump device**

This high-precision weft insertion device, according to the weaving characteristics of customers, is equipped with a reasonable weft insertion system, so that the loom can meet the requirements of high-speed and efficient weaving.

**机械送经**

可以配置不同配重块,实现不同织物织造张力的需求。

**Mechanical let-off**

There are different clump weights for different configurations, the demands of different fabrics for weaving tension are met.

**机械卷取**

通过更换不同组合的纬密齿轮,能够实现不同纬密织物的织造,操作方便。

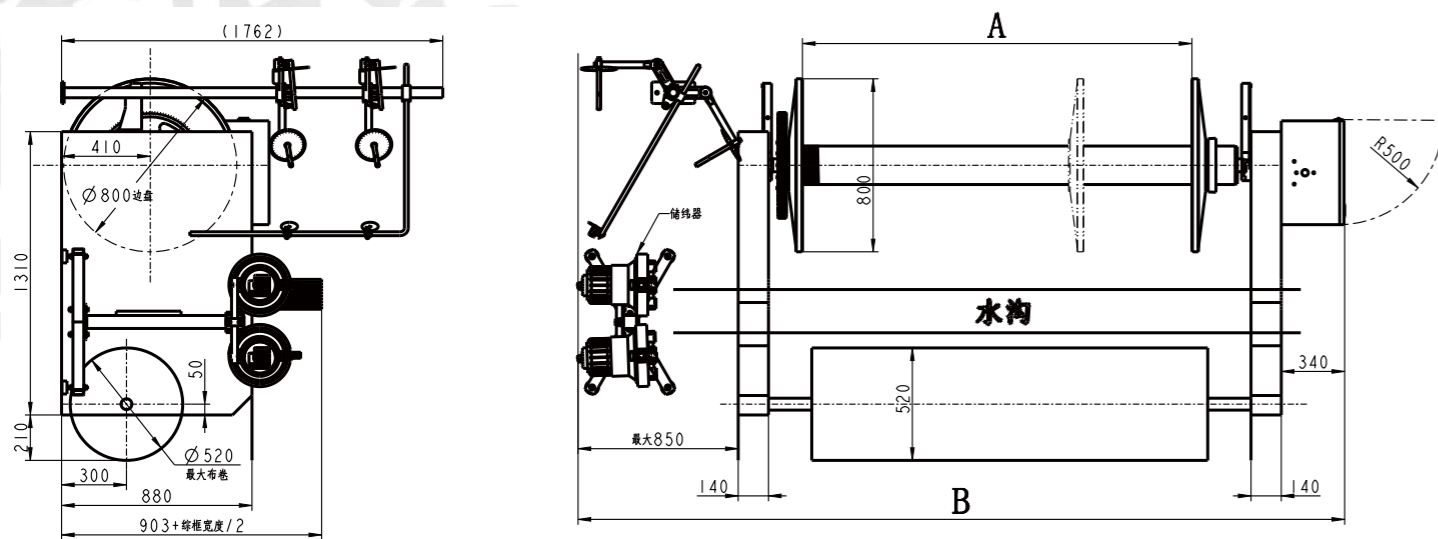
**Mechanical batching**

By changing to the weft density gears with different combinations, the weaving of the fabrics with different weft density can be achieved, the operation is convenient

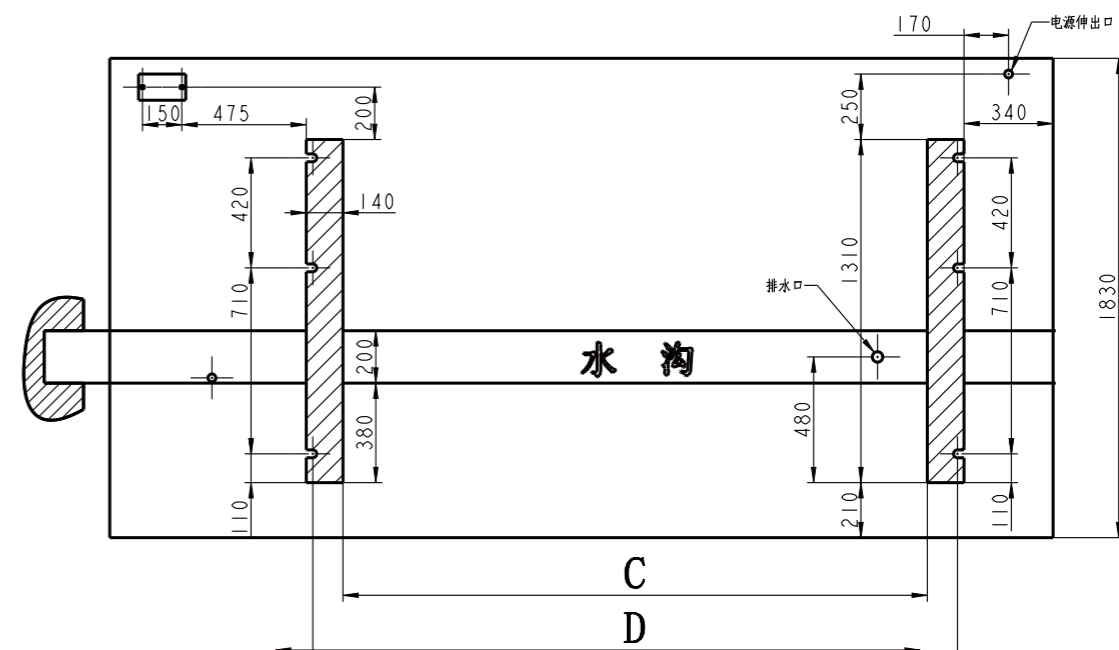
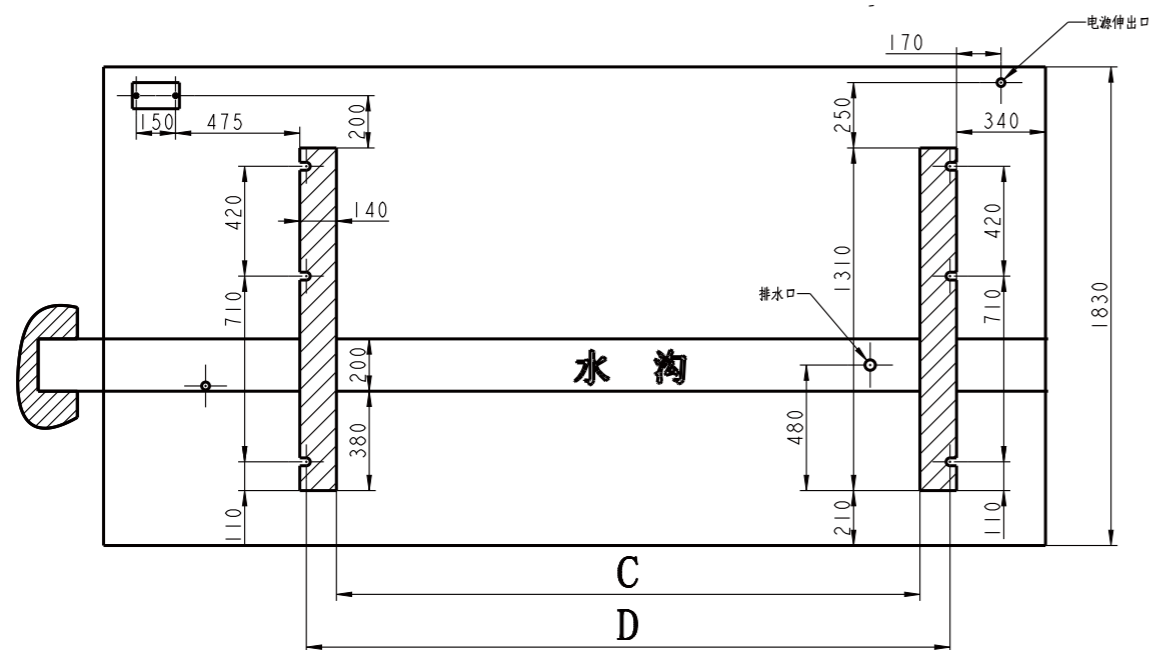
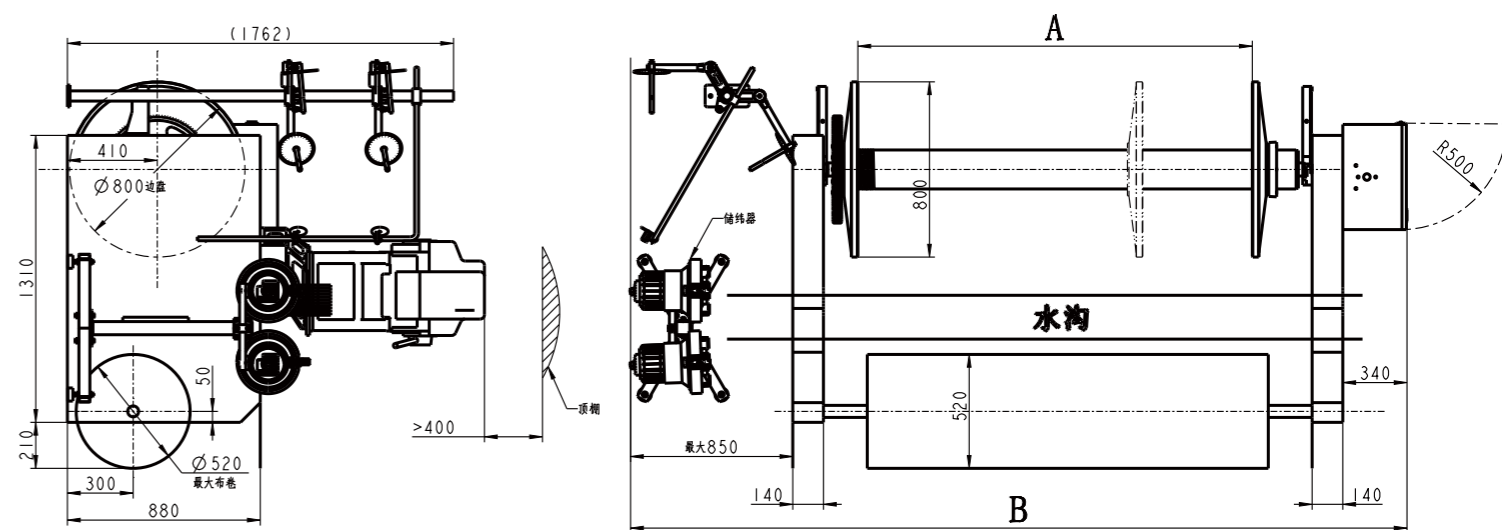
项目 Item		规格 Specifications	
箱幅 Width	公称箱幅 Reed Width	190、210、230、280、320、340、360cm	
	有效箱幅 Working Width	公称箱幅减0-60cm Reed width minus 0-60cm	
纬纱选择 Weft Color		2色自由选纬 2 color at will	
动力 Power	启动方式 Start Mode	超启动马达驱动 / 直驱马达 Super motor / Direct motor	
	马达功率 Motor Capacity	2.7kW、3.0kW、3.7kW、4.5kW	
	运转操作 Working	通过电磁制动器直接控制定位停车 Brake through electromagnetism clutch 按钮操作 (准备、运转、停止、正向点动、反向点动、倒转1圈后定位停车) Buttons (prepare, start, stop, forwarder inching, reverse inching, reverse one circle) 自动对织口 Automatic pick finding	
打纬 Beating		直线打纬机构 Lineal beating mechanism	
引纬 Insertion	泵 Pump	柱塞式弹簧加压方式 Plunger pump	
	喷嘴 Nozzle	环形喷嘴稳压器方式 (陶瓷喷嘴) Annular nozzle manostat (ceramics jet needle)	
	测长储纬 Accumulator	振动电动鼓筒测长储纬装置 Vibration electric drum accumulator	选配件: WBS纬纱制动器 Options: WBS Electric weft 选配件: 电动式纬纱拉回装置 Options: Electric weft Drawing device
开口 Shedding Device		曲柄开口: 4、6片综框 Crank: 4 heald frames, 6 heald frames	
		凸轮开口: 10片综框 Cam: 10 heald frames	
		多臂开口: 16片综框 Dobby: 16 heald frames	
		大提花开口 Jacquard	
送经 Let-off		电子或机械 Electronic or mechanical	
	最大张力 Max Tension	2500N、5000N	
	后梁 Back-roller	标准 Standard	
	边盘直径 Flange Diameter	800mm、1000mm	选配件Options: 1000mm
卷取 Take-up		电子或机械 Electronic or mechanical	
	布卷径 Cloth Diameter	520mm	
	布卷经路 Cloth Route	S1形、S2形 Type S1, Type S2	
供纱架 Cone Stand		落地式横向4纱筒 4 cone stand	
布边装置 Selvage		行星齿轮式 Planet gear	
纱端处理 Handling of Yarn End		锭子假捻方式 Spindle false twisting	
剪纬器 Weft Cutter		机械式剪纬器 Mechanical	
边撑 Temple		上置式双边撑杆双环 Up-mounted double temples shaft with double rings	
脱水 Dehydration		微缝管吸入方式 (机械风机) Tiny crevice pipe suction(Mechanical fan)	
停车装置 Stop motion	断纬 Weft Stop	OPF光电式探纬器 OPF photoelectric sensor	
	显示停车原因 Display of Stop Reasons	显示屏显示信息 Screen panel	
		多功能4灯式停车显示灯 Multi-function 4-light indicating	
自动化 Automatic	主控 Main Control	自动控制、故障排除、自我诊断功能 Auto control, fault remove, itself diagnosis	
	网络 Net	运转信息的显示、维修信息的显示等 Showing of working info and maintenance data 集中联网、织机监控系统 Centralizing net connection, loom supervisory system	

尺寸图  
DIMENSIONS

RFJW03 平开口 (边盘800)  
RFJW03 Plain shedding (Flange dia 800mm)



RFJW03 凸轮、多臂开口 (边盘800)  
RFJW03 Cam, dobby shedding (Flange dia 800mm)



箱幅宽 Width	A	B	C	D
190cm	1900	3700	2230	2400
210cm	2100	3900	2430	2600
230cm	2300	4100	2630	2800
280cm	2800	4600	3130	3300
300cm	3000	4800	3330	3500
320cm	3200	5000	3530	3700
340cm	3400	5200	3730	3900
360cm	3600	5400	3930	4100

箱幅宽 Width	A	B	C	D
190cm	1900	3700	2230	2400
210cm	2100	3900	2430	2600
230cm	2300	4100	2630	2800
280cm	2800	4600	3130	3300
300cm	3000	4800	3330	3500
320cm	3200	5000	3530	3700
340cm	3400	5200	3730	3900
360cm	3600	5400	3930	4100